

9. Admin functions

10. Help contact info

1. Customer information

2. Language selection

3. Check & export function

4. Full data table


5. Direct edit & copy/paste

6. Contextual help & reminders

7. Main Capture Tool

8. Smart delete



TPTIBS
Builder



U IT Financial Company

License granted to the company 'TRIAL VERSION' until 2015/03/31 included.

Layout 1
v 3.0



Version
1.4

End Month Date
2014-12-31

Currency
EUR



Reporter
Type 05 Code 0008888

Creating Date
2015-01-15T01:36:42

Closing Date
2014-12-31

Layout
1

Declarant
Type 35 Code 0009999



TPTIBS_L1_201412_5000008888_DSE0009999_20150112_001.xml

Check & Export Xml

	reportedLine	securityID								percentage quoted	units quoted			
LineID	Item	Country	Currency	Sector	Code Type	Code	Hold Security Type	Custodian Bank Country	Securities Type	Quotation Type	Nominal Amount	Nominal Currency	Number Of Units	Reported Amount
Edit line	1-003000	XX	XXX	90000	1	US5949181045	01	CH	Debt	1	10 000.00	CHF	147 163 830.00	866 656.00
Edit line	1-003000	XX	XXX	90000	2	Code1	01	LU	Debt	2			141 763 830.00	141 763 830.00
Edit line	1-005000	XX	XXX	90000	1	US38259P5089	01	LU	Equity	2			1 299 282 562.00	170 824 118.00
Edit line	1-005000	XX	XXX	90000	2	Code2	01	LU	Equity	2			20 000.00	2 000 000.00
Edit line	1-005000	XX	XXX	90000	2	Code3	01	LU	Equity	2			100.00	500 000.00
Edit line	2-002050	XX	XXX	90000	1	NL0000729408	05		Equity	2			20.00	0.89
Edit line	2-002050	XX	XXX	90000	2	CodeCoinCoin	05		Equity	2			2.00	125.37
Edit line	2-003000	XX	XXX	90000	1	JP3946600000	04		Debt	1	353 550 000.00	USD	39 178 816.00	363 125 314.00
Edit line	2-003000	XX	XXX	90000	2	RCS CODE	04		Debt	2			39 178 816.00	139 178 816.00
Edit line	2-C05000	XX	XXX	90000	1	DE000DB71117	04		Equity	2			500.00	2 000 000.00
Edit line	2-C05000	XX	XXX	90000	2	RCS CODE2	04		Equity	2			300.00	1 000 000.00
Edit line	2-C05000	XX	XXX	90000	2	RCS CODE3	04		Equity	2			1.00	50 000.00
Add a line														



1. Customer information

Visibility

Declarant company name can be set by the user, one copy of the tool by issuer
Yearly licensing of the tool includes now any major update required by the regulators

2. Language selection

Interface

Choose between English / French languages
Full translation (text buttons, comments, info / warnings / error messages)

3. Check & export function

Consolidation Consolidation

Perform a verification of all the values
No export possible if the macro spots at least one error

4. Full data table

Visibility

On large screen allows to see all data on a single screen

5. Direct edit & copy/paste

Interface

Edit directly in the cells for small correction
Copy/Paste data from another sheet or text document

Zoomed out view of the whole
TPTIBS data table

High visibility on large screens

6. Contextual help & reminders

Interface Interface

Short help or summary displayed for each value area
Available in English or French - Can be deactivated in the admin menu

Custodian Bank Country	Custodian Bank Country : The country of the custodian bank (asset side)
CH	The variable indicates the country of the custodian bank. It is essential for the BCL to know whether a security is held or not with a custodian Luxembourg bank.
LU	If the security is not held within a custodian bank, the country code to report must be «XXX».
---	(Code ISO 3166)

Security Type	Security Type
	The security type is identified by a code:
	Item Authorized values
	1-003000 F.3
	1-005000 F.511, F.512, F.519, F.52
	2-002050 F.3, F.511, F.512, F.519, F.52
	2-003000 F.3
	2-C05000 F.511, F.512, F.519
F.3	F.3 : Debt securities
F.511	F.511 : Quoted shares
F.512	F.512 : Unquoted shares
F.519	F.519 : Other equity
F.52	F.52 : Shares/units of investment funds

7. Main Capture Tool

Visibility
Consolidation
Interface

All-in-one screen

Enable/Disable sections and narrow choices lists dynamically upon item or security type
Navigate through records, delete, clone easily

Item selection

Droplist values

Security type selection

Dynamic sections

Contextual help

Navigation buttons

Clone / Delete record

Interface
Interface

Delete item lines easily in 1 clic
Double clic the icon to remove all the line of the table

8. Smart delete

TPTIBS_L1_201412_5000008888_DSE0009999_20150122_001.xml

Check & Export Xml

Line	Item	Country	Currency	Sector	Code Type	Code	Hold Security Type	Custodian Bank Country	Securities Type	Quotation Type	Nominal Amount	Nominal Currency	Number Of Units	Reported Amount
Edit line	1-003000	XX	XXX	90000	1	US5949181045	01	CH	Debt	1	10 000.00	CHF	147 163 830.00	866 666.00
Edit line	1-003000	XX	XXX	90000	2	Code1	01	LU	Debt	2			141 763 830.00	
Edit line	1-005000	XX	XXX	90000	1	US382595089	01	LU	Equity	2			1 299 282 562.00	170 824 118.00
Edit line	1-005000	XX	XXX	90000	2	Code2	01	LU	Equity	2			20 000.00	2 000 000.00
Edit line	1-005000	XX	XXX	90000	2	Code3	01	LU	Equity	2			100.00	500 000.00
Edit line	2-002050	XX	XXX	90000	1	NL0000729408	05		Equity	2			20.00	0.65
Edit line	2-002050	XX	XXX	90000	2	CodeComCom	05		Equity	2			2.00	125.37
Edit line	2-003000	XX	XXX	90000	1	JP3946600008	04		Debt	1			363 550 000.00	363 125 314.00
Edit line	2-003000	XX	XXX	90000	2	RCS CODE1	04		Debt	2			39 178 916.00	139 178 916.00
Edit line	2-005000	XX	XXX	90000	2	RCS CODE2	04		Equity	2			500.00	2 000 000.00
Edit line	2-005000	XX	XXX	90000	2	RCS CODE3	04		Equity	2				

TPTIBS_L1_201412_5000008888_DSE0009999_20150122_001.xml

Check & Export Xml

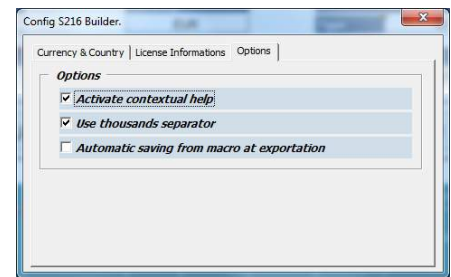
Confirm the deletion of the selected data: [A21AF23]

Out Non

9. Admin functions

Consolidation
Interface
Options

Allow to add or remove a currency or country code
Displays licence information
Allow content's configuration for comments and calculated amounts



10. Help contact info

Support

Need help ? 1 click contact info window

