

10. Admin functions

11. Help contact info

1. Customer information

2. Language selection



TPTIBS Builder

UIT

U IT Financial Company

License granted to the company " until 2017/12/31 included.

Layout 1 v 3.2



Version 1.4

End Month Date 2015-12-31

Currency EUR

Reporter Type 35 Code 0012355

Open a TPTIBS report (.xml)

Creating Date 2017-03-17T11:17:23



Closing Date 2015-12-31

Layout 1


Declarant Type 35 Code 0012345

Paste the clipboard

9. Smart delete



TPTIBS\_L1\_201512\_DSE0012355\_DSE0012345\_20170317\_001.xml

Check & Export Xml 

3. Check & export + Cross-Check

8. Main Capture Tool

	reportedLine				securityID						percentageQuoted		CurrencyQuoted	
LineID	Item	Country	Currency	Sector	Code Type	Code	Hold Security Type	Custodian Bank Country	Debt Equity	Quotation Type	Nominal Amount	Nominal Currency	Number Of Units	Reported Amount
Edit Line	1-003000	XX	XXX	90000	1	FR0000133308	1	AD	debt	1	1000	USD		3000
Edit Line	1-003000	XX	XXX	90000	1	FR0003500008	01	AD	debt	1	1000	USD		3500
Edit Line	1-003000	XX	XXX	90000	1	US5949181045	01	AD	debt	1	1000	USD		3500
Edit Line	2-002050	XX	XXX	90000	1	CH0044328745	05		debt	2			125	7500
Edit Line	2-003000	XX	XXX	90000	1	CH0102993182	04		debt	1	14	AFN		10000
Edit Line	2-003000	XX	XXX	90000	1	CH0114405324	04		debt	1	14	AFN		5000
Edit Line	2-C05000	XX	XXX	90000	1	IE00B446CM77	04		equity	2			85	10000
Edit Line	2-C05000	XX	XXX	90000	1	IE00B4BNMY34	04		equity	2			85	2501
Add a line														

7. Contextual help & reminders

6. Full data table

4. Quick-Update

5. Direct cells edit & Paste function

## 1. Customer information

### Visibility

### Consolidation

Declarant company name can be set by the user, one copy of the tool by issuer  
Yearly licensing of the tool includes now any major update required by the regulators

## 2. Language selection

### Interface

Choose between English / French languages  
Full translation (text buttons, comments, info / warnings / error messages)

## 3. Check & export + Cross-Check

### Consolidation

### Consolidation

### Consolidation

### Consolidation

Perform a verification of all the values  
No export possible if the macro spots at least one error  
Many supplementary controls, quality filters added to limit initial capture errors  
Specific cross-check function to verify TPT monthly numbers with S216 quarterly ones

## 4. Quick-Update

### Consolidation

### Automation

Update the whole table in a few clicks using a configurable data importation  
All amounts value can be updated using a reference data file (similar to a pivot table)

## 5. Direct cells edit & Paste function

### Visibility

### Interface

On large screen allows to see all data on a single screen

## 6. Full data table

### Interface

Edit directly in the cells for small correction  
Copy/Paste data button from another sheet or text document for fast filling

Zoomed out view of the whole  
TPTIBS data table

High visibility on large screens

## 7. Contextual help & reminders

### Interface

### Interface

Short help or summary displayed for each value area  
Available in English or French - Can be deactivated in the admin menu

Custodian Bank Country	Custodian Bank Country
AD	AD
AD	AD
AD	AD

Quotation Type	Quotation Type
code = 1 : Cotation en pourcentage.	code = 1 : Cotation en pourcentage.
En capital nominal (face value) lorsqu'il s'agit de titres dont les prix sont exprimés en pourcentage de la valeur nominale.	En capital nominal (face value) lorsqu'il s'agit de titres dont les prix sont exprimés en pourcentage de la valeur nominale.
La devise du nominal doit être renseignée pour indiquer la devise d'expression du capital nominal.	La devise du nominal doit être renseignée pour indiquer la devise d'expression du capital nominal.
code = 2 : Cotation en devise.	code = 2 : Cotation en devise.
En nombre de titres dans les autres cas.	En nombre de titres dans les autres cas.
Le capital nominal et la devise du nominal ne doivent pas être renseignés lorsque la quantité est exprimée en nombre de titres.	Le capital nominal et la devise du nominal ne doivent pas être renseignés lorsque la quantité est exprimée en nombre de titres.

Security Type	Security Type
The security type is identified by a code:	The security type is identified by a code:
Item	Authorized values
1-003000	F.3
1-005000	F.511, F.512, F.519, F.52
2-002050	F.3, F.511, F.512, F.519, F.52
2-003000	F.3
2-005000	F.511, F.512, F.519
F.3 : Debt securities	F.3 : Debt securities
F.511 : Quoted shares	F.511 : Quoted shares
F.512 : Unquoted shares	F.512 : Unquoted shares
F.519 : Other equity	F.519 : Other equity
F.52 : Shares/units of investment funds	F.52 : Shares/units of investment funds

RUBRIQUE :	RUBRIQUE :
- Actifs -	- Actifs -
1-003000 : Titres de créance détenus	1-003000 : Titres de créance détenus
1-005000 : Titres de participation détenus	1-005000 : Titres de participation détenus
- Passifs -	- Passifs -
2-002050 : Ventes à découvert de titres	2-002050 : Ventes à découvert de titres
2-003000 : Titres de créance émis	2-003000 : Titres de créance émis
2-005000 : Capital, réserves et résultats	2-005000 : Capital, réserves et résultats

## 8. Main Capture Tool

Visibility  
Consolidation  
Interface

All-in-one screen

Enable/Disable sections and narrow choices lists dynamically upon item or security type  
Navigate through records, delete, clone easily

Item selection

Item selection dropdown menu showing various security types and their descriptions.

Security type selection

Security type selection dropdown menu showing various security types and their descriptions.

Droplist values

Droplist values showing various security types and their descriptions.

Dynamic sections

Monthly security by security reporting of financial companies. TPTIBS Encoding Box. [1-003000 - XX - XXX - 90000] for line [30] - Mode: "Edit, modify, delete or clone a line".

Item: 1-003000, Country: XX, Currency: XXX, Sector: 90000

Security: securityCode, Code1, holdSecurityType, custodianBankCountry, Debt / Equity

Quotation: Quotation Type, Percentage quoted (%), Currency quoted (Units), nominalAmount, nominalCurrency, numberUnits, reportedAmount

Other Security Code Informations: name, currency, country, sector, securityType, Debt supplements, Equity supplements

Actions: Jump to, Clone, Delete

Droplist values

Droplist values showing various security types and their descriptions.

Contextual help

Navigation buttons

Clone / Delete record

## 9. Smart delete

Interface  
Interface

Delete item lines easily in 1 clic

Double clic the icon to remove all the line of the table

TPTIBS\_L1\_201701\_DSE0012355\_DSE0012345\_20170125\_001.xml

Check & Export Xml

Line	Item	Country	Currency	Sector	Code Type	Code	Hold Security Type	Custodian Bank Country	Debt Equity	Quotation Type	Nominal Amount	Nominal Currency	Number Of Units	Reported Amount
Edit Line	1-003000	XX	XXX	90000	1	FR0000133308	01	AD	debt	1	1 000.00	USD		3 000.00
Edit Line	1-003000	XX	XXX	90000	1	FR0003500008	01	AD	debt	1	1 000.00	USD		3 000.00
Edit Line	1-003000	XX	XXX	90000	1	US9448181545	01	AD	debt	1	1 000.00	USD		3 000.00
Edit Line	2-002050	XX	XXX	90000	1	CH0044326745	05	AD	debt	2	14.00	AFN	125.00	7 500.00
Edit Line	2-003000	XX	XXX	90000	1	CH0102993182	04	AD	debt	1	14.00	AFN		10 000.00
Edit Line	2-003000	XX	XXX	90000	1	CH0114405324	04	AD	debt	1	14.00	AFN		5 000.00
Edit Line	2-005000	XX	XXX	90000	1	IE000446CM77	04	AD	equity	2	85.00	EUR	20 058 840.00	10 000.00
Edit Line	2-005000	XX	XXX	90000	2	JP3946600008	04	AD	equity	2	4 500.00	EUR	39 718 816.00	10 000.00
Edit Line	2-005000	XX	XXX	90000	2	RCS CODE2	04	AD	equity	2	120.00	EUR	755 022.00	10 000.00
Edit Line	1-003000	XX	XXX	90000	2	RCS CODE3	02	BE	Debt	1	5 522 014.00	EUR		755 022.00

TPTIBS Builder: Confirmation 1

Confirm the deletion of the selected data: [A21.AF23]

Oui Non



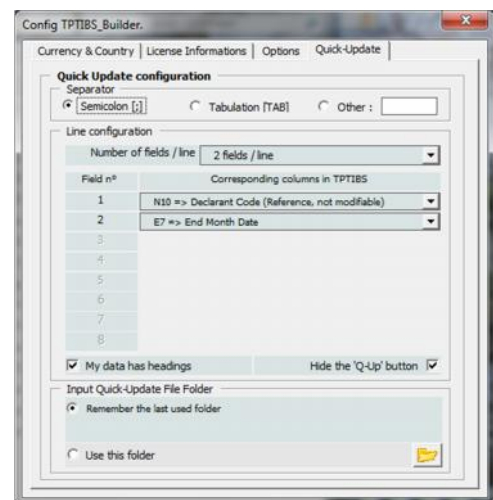
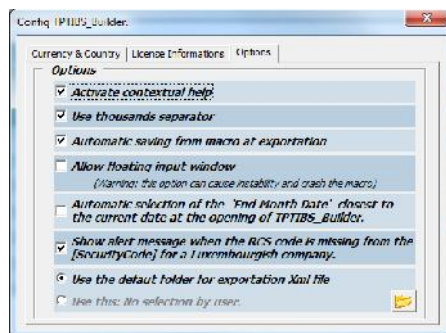
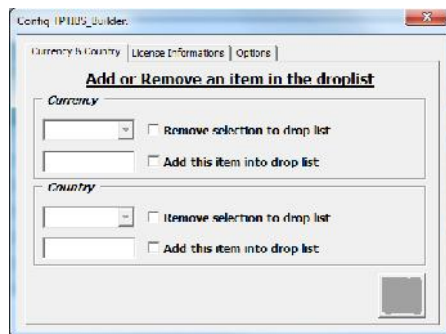
## 10. Admin functions

### Consolidation Interface Options

Allow to add or remove a currency or country code  
Displays licence information

### Quick-Update

Allow to configure various options for the user : activate contextual help, display thousand separator, save macro at export, auto-select report date based on current date, define a default folder to generate the reports, etc ...  
Set the Quick-Update date file structure & options



## 11. Help contact info

### Support

Need help ? 1 click contact info window

