

1. Customer information

Consolidation  
Visibility

Yearly licensing of the tool includes now any major update required by the regulators  
Declarant company name can be set by the user, one copy of the tool by issuer



One directory and one copy by company. Keep your captured data from months to months

2. Total by Item

Consolidation

Calculates and display the total amounts for each item, allows quick verifications

Calculates almost instantly the totals, independent window, refresh button



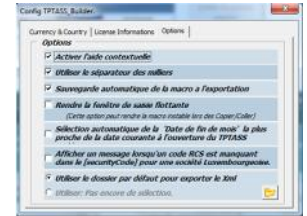
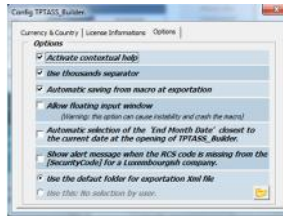
Item Rubrique	TOTAL
1-003000	3 043 350,17
1-005000	2 018 093,81
2-002050	0,00
2-003000	0,00
2-005000	1 100 000,00

3. Language selection

Interface

Choose between English / French languages

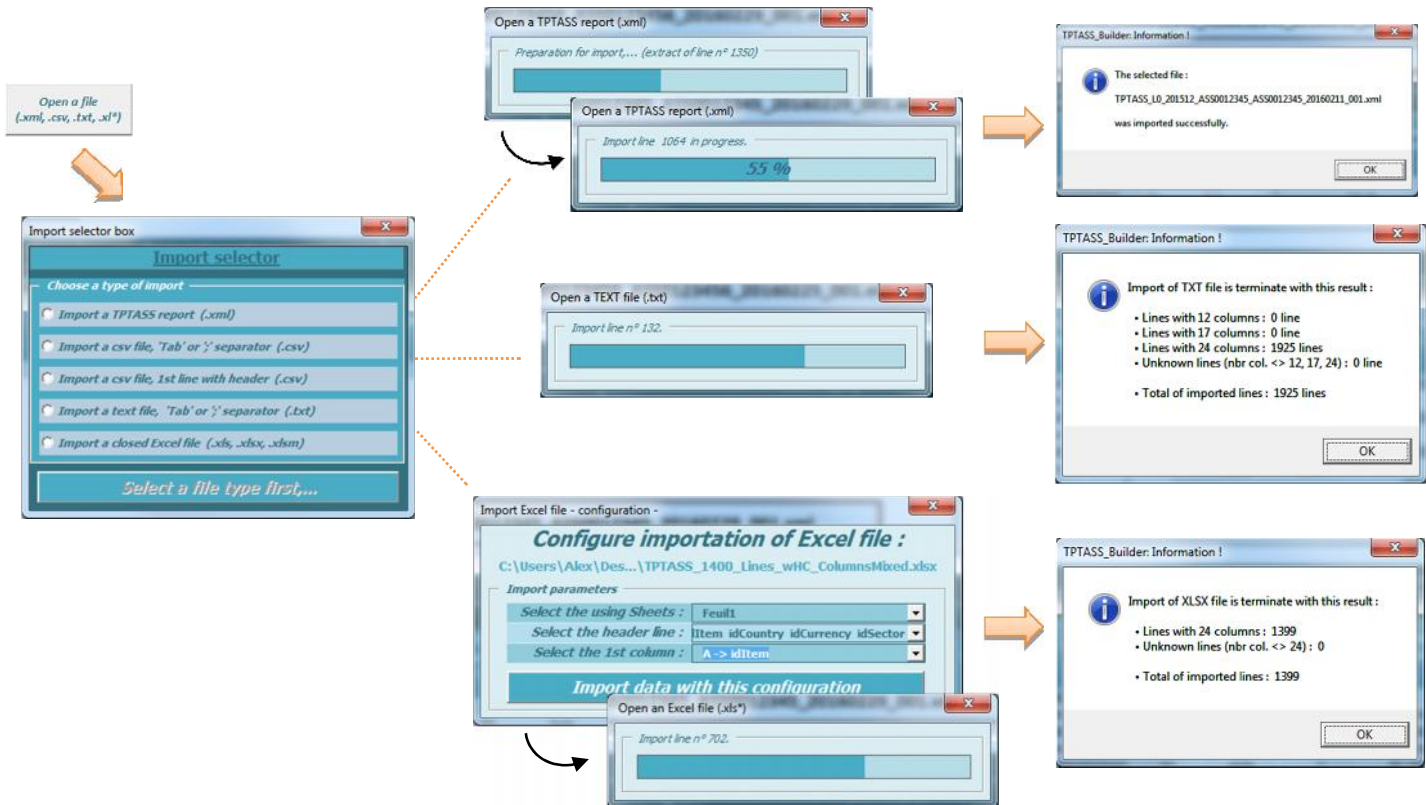
Full translation (text buttons, comments, info / warnings / error messages, options)



4. Import a report

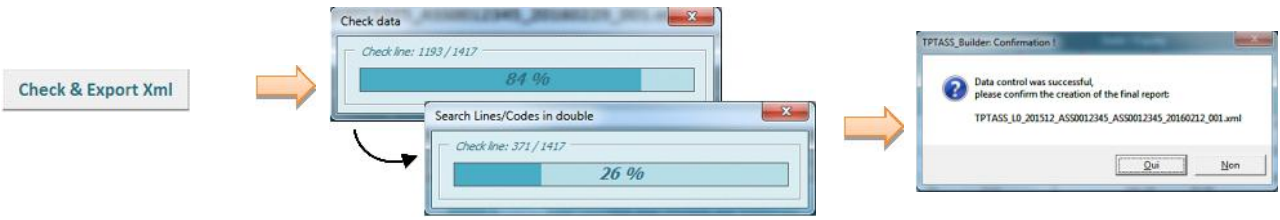
Interface  
Consolidation

Open a TPTASS report or import your data from a text, CSV or even an excel document  
Multi-thousands lines reports handled.



5. Check & export + Cross-Check

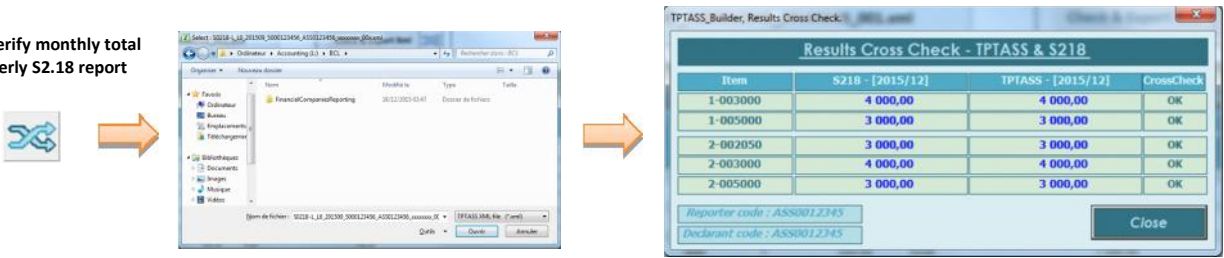
Consolidation Consolidation Consolidation Consolidation  
 Perform a verification of all the values  
 No export possible if the macro spots at least one error  
 Many supplementary controls, quality filters added to limit initial capture errors  
 Specific cross-check function to verify TPT monthly numbers with S218 quarterly ones



Error message during "Check"  
 Highlighting the wrong value



Cross-Check : verify monthly total with the quarterly S2.18 report



6. Full data table view

Visibility On large screen allows to see all data on a single screen

Zoomed out view of the whole TPTASS data table

High visibility on large screens

7. Paste function & direct cells edit

Interface Interface  
 Edit directly in the cells for small corrections  
 Copy/Paste data buton from another sheet or text document for fast filling



5000 lines pasted in 2 minutes – last line is an empty one

8. Contextual help & reminders

Interface Interface

Short help or summary displayed for each value area Available in English or French - Can be deactivated in the admin menu

The screenshots show the application interface with contextual help windows. The first window, titled 'Security (common)', displays help for the 'Hold Security Type' field, explaining that it allows for double counting avoidance and lists codes for different security types (e.g., 01: Titres détenus sans opération de cession temporaire). The second window, titled 'Debt supplements', lists various sectors for securities without an ISIN code, such as Central government, State government, and Local government. A third window shows help for the 'Security Type' field, listing authorized values like F.3 and F.52.

9. Main Capture Tool

Visibility Consolidation Interface

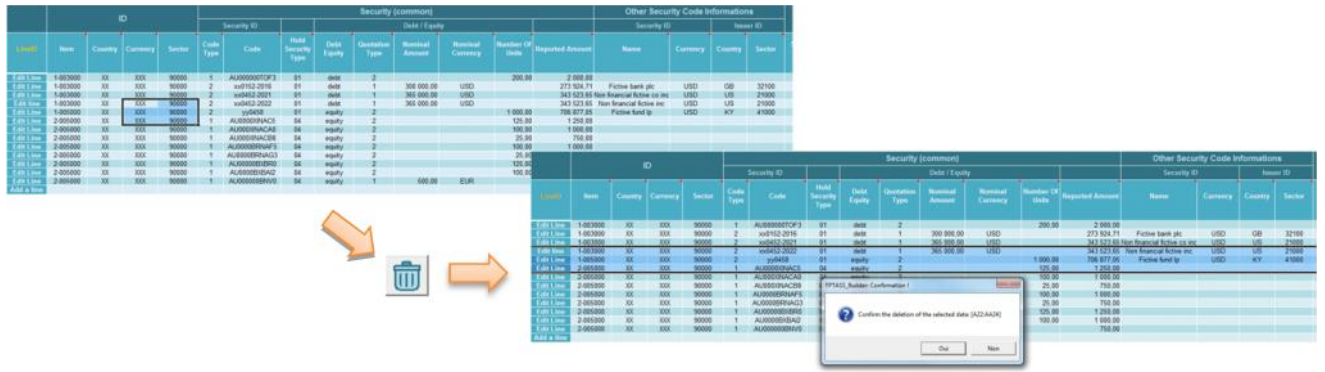
All-in-one screen Enable/Disable sections and narrow choices lists dynamically upon item or security type Navigate through records, delete, clone easily

The main screenshot shows the 'Monthly security by security reporting of insurance corporations' interface. It features a central data entry form with sections for 'Security', 'Quotation', and 'Debt supplements'. Callouts highlight various features: 'Item selection' points to a dropdown menu; 'Security type selection' points to a dropdown for 'holdSecurityType'; 'Droplist values' points to multiple dropdown menus for fields like 'nominalCurrency' and 'currencyQuoted'; 'Dynamic sections' points to the 'Other Security Code Informations' section; 'Navigation buttons' points to 'Jump to' and 'Clone / Delete record' buttons; 'Contextual help' points to an information icon; and 'Clone / Delete record' points to a specific button in the 'Actions' section.

10. Smart delete

Interface Interface

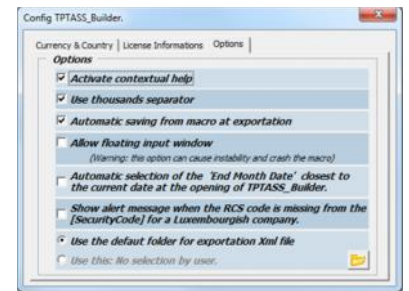
Delete item lines easily in 1 clic  
Double clic the icon to remove all the line of the table



11. Admin functions

Consolidation Interface Options

Allow to add or remove a currency or country code  
Displays licence information  
Allow to configure various options for the user : activate contextual help, display thousand separator, save macro at export, auto-select report date based on current date, define a default folder to generate the reports, etc ...



12. Help contact info

Support

Need help ? 1 click contact info window

