

# Documentation S403 Builder v1.2

## Table of Contents

<b>System Requirements.....</b>	<b>2</b>
1. Office / Excel 2007.....	2
2. Office / Excel 2010.....	2
3. Office / Excel 2013.....	2
4. Office / Excel 2016.....	2
<b>Section Header .....</b>	<b>3</b>
1. Header Information .....	3
2. Administration button .....	3
3. Language Button.....	5
4. Global View .....	5
<b>Tool Section.....</b>	<b>6</b>
5. Tool information.....	6
6. Open a S403 Report.....	7
7. The file name validator button.....	9
8. « Check » button .....	9
9. « Export S403 » button.....	9
10. Error Cases .....	10
11. Export the S403 report .....	12
<b>Data Section .....</b>	<b>13</b>
12. Tables - global view .....	13
13. Encoding.....	14
14. Insert new lines .....	15
15. Item Occurrences .....	15
16. Delete one or more lines .....	16
17. Copy data from another source : .....	18
<b>Excel options &amp; Settings .....</b>	<b>19</b>
1. Macros accepted.....	19
2. Macros disabled .....	19
3. Invitation to allow macros .....	21
<b>Best Practises.....</b>	<b>22</b>
1. Tips.....	22

## System Requirements

- The S403 Builder is compatible with Excel 2007, 2010, 2013 & 2016
- The tool wasn't tested on Excel 365 and is not officially compatible nor supported
- Older office versions (2000, 2003) are not supported.

### 1. Office / Excel 2007

---

- Requires Service Pack 3

### 2. Office / Excel 2010

---

- Requires Service Pack 1 or Service Pack 2

### 3. Office / Excel 2013

---

- Runs on original version or Service Pack 1

### 4. Office / Excel 2016

---

- This should run fine, please contact us if you encounter any issue using the tool on Excel 2016

# Section Header

## 1. Header Information

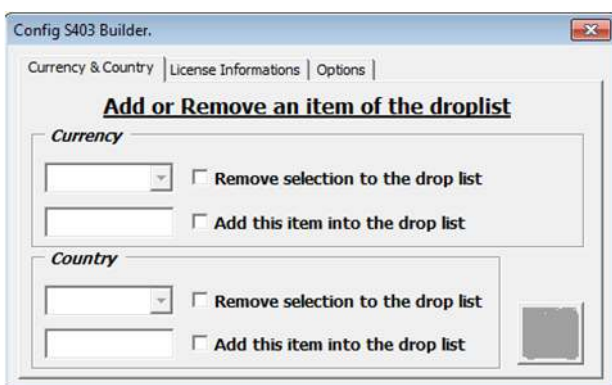
- Place the cursor over the blue titles to display explanatory information about those fields.
- In this section only the white fields can be modified by the user. The grey fields cannot be modified.
- The **Company name** can be changed by simply clicking on the field and modify the text.

## 2. Administration button



Displays the administration panel – Allows the modification of the drop lists Currency/Country. Additionally users can see their license information either choose some extra options.

- Add/remove a Currency code or Country.
- Review a license.
- Modify preferred options.

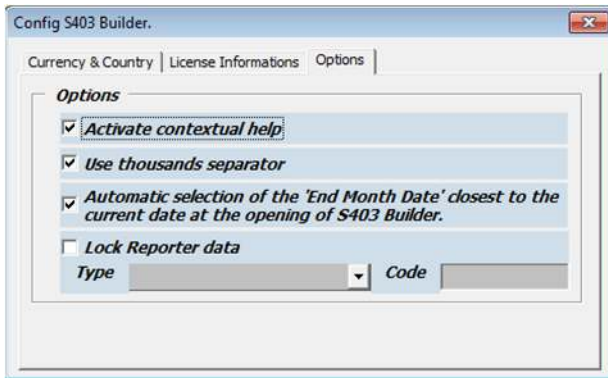


### Currency & Country Tab:

By default, the drop lists Country/Currency of the Assets/Liabilities tables, contain all the available countries and currencies to transact with. If the users want to limit this content just to their transactional needs they can simple remove any item from the list, first by clicking in the checkboxes to define their action: **ADD/REMOVE**. After they can choose which of the lists' items need to added or removed for a country or currency respectively. To save the changes made, click on the save button that will appear after the modifications made.

*In order these changes to be applied, please save the S403\_Builder and simply reopen it.*

## Options Tab



### ➤ Activate contextual help

Displays comment sections over the fields, providing information/directions to the users.

### ➤ Use thousands separator

When activated, separates big numbers in thousands by applying a space as a delimiter between the digits. This option helps the user identify easier the length of a long number.

### ➤ Auto selection of the “End of month Date”

When launching the application, the reporting period: “End of month date” is set to the closest reporting date. For example if the current date is 22/05/2017 the End of month date will be set to 31/05/2017.

### ➤ Use the default folder for the exportation of the xml file.

By enabling this functionality the user can decide which will be the output folder for the generated report. **By default** the reports are generated in the folder where the S106 builder is located.

### ➤ Lock reporter data

With this function, the user can lock fields “Type” and “Code” for the reporter, preventing to :

- Re-type the Reporter’s code for each entities, each month
- Commit an error by typing a wrong code

This is useful when you report for many entities : perform this change on the original copy of the tool provided by UIT, save it then perform as many copies of the tools than entities you report for. Use this saved copy as your main template of the macro for the year.

### 3. Language Button



→ Switch between languages by choosing a flag (French / English).

By clicking the language button you apply the translation for all the reporter's fields. This contains header names, buttons, labels and any displayed comment.

### 4. Global View

*The grey fields can't change. They are automatically calculated. If changed they turn back to their default values*  
 A company can report either for itself or for other companies. The Company **which conducts the report** is called the Reporter and the company **to report for** is the Declarant. If a company reports for itself it should have the same fields filled for both Type/Code of Reporter/Declarant respectively

**Date fields:** the **End Of Month Date** and a month's **Closing Date** shall be the last day of the reporting month. Choose from the **End Of Month Date** list. → A change in the month's end date automatically causes the same change in the Closing Date.

**The Reporting code** is the BCL identifier for the company which is reporting. It is coded in 7 digits (preceded by '0' [zero] if necessary).  
**The Reporting Type** is the type of the company which does the reporting.

The following options are included in the **Type** drop list:

- 05 special code assigned by the BCL
- 23 Banks
- 30 Management Companies
- 32 PSF Company - Type P
- 36 IIT companies
- 39 Insurance companies (ASS)

and can be displayed by clicking on it.

Version 1.0	End Month Date 2015-03-31	Currency EUR	Reporter Type: 32 Code: 0008888
Creating Date 2015-12-11T15:55:17	Closing Date 2015-03-31	Layout 0	Declarant Type: 39 Code: 0009999

**Currency:**

It defines **in which** currency the report will be **calculated**.  
 E.g. : If the selected currency is in euro, all the reported amounts that will be captured, will be considered in the euro currency.

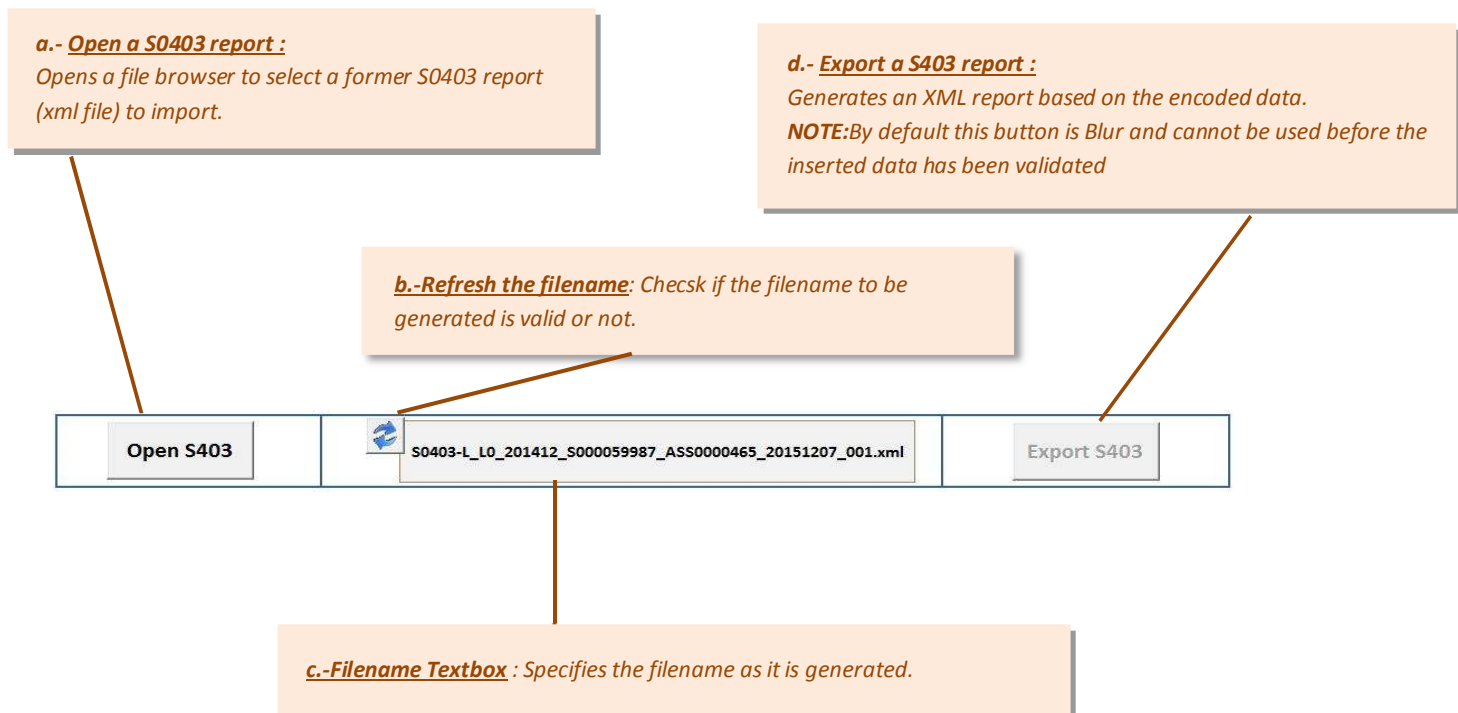
**The Declarant Code** is:

or your company (same code Reporter)  
 or the company for which the report is generated.  
 The company's code is given by the BCL, coded on 7 figures (with leading '0' [zero] if necessary).  
 The Registrant is required to ASS Type (Type 39)

## Tool Section

### 5. Tool information

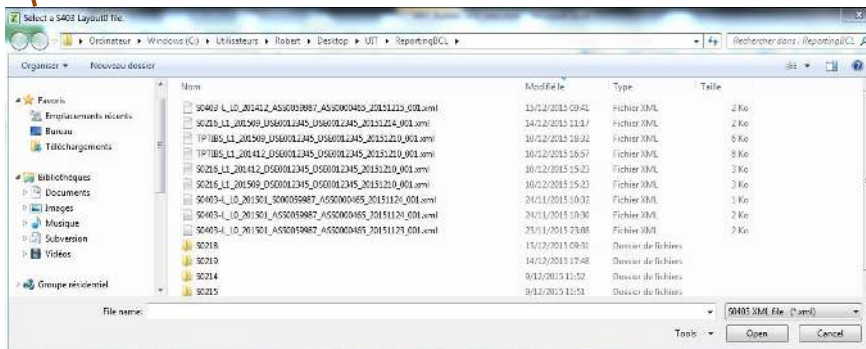
- The **Open S403** button imports a previously created report by S403 builder.
- The **Refresh Filename** button validates the file's name.
- The **Filename Textbox** represents the report's name. The exported report will have this name.
- The **Export S403** button generates the report that has been conducted.



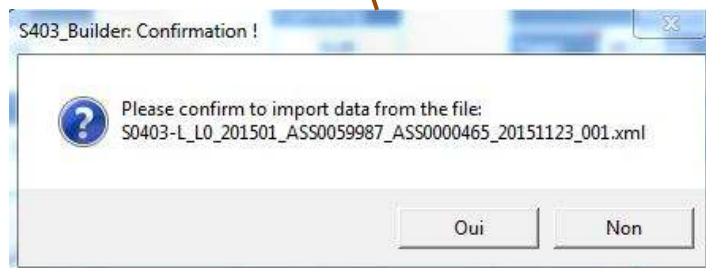
## 6. Open a S403 Report



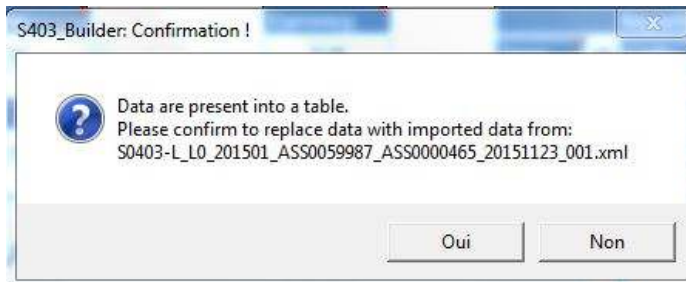
Click the "Open S403" button to open a file browser to select a report to be imported



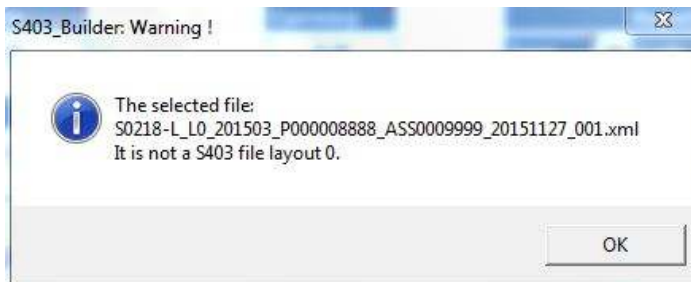
Select the report to be loaded and click Open.  
Confirmation: Yes to confirm the import, No to cancel.



*When the user will try to open a new report before finishing/saving the already opened one, the following message will be displayed.*



*If the loaded file's name is not valid the tool displays the following error*





## 7. The file name validator button



Updates and displays the report's filename in the main frame.  
If there is an error with the file name, its color is turned to red.

## 8. « Check » button



This button checks if all the captured values follow the report's rules and formats.

*After clicking the **Data Validity Verification** button, all the captured content will be checked in order to detect any errors. In case of an error the user will be informed with a specific message and the export button will not be available. It will be blur.*

**NOTE:** *If this button is not clicked it will not be possible to export a report*

## 9. « Export S403 » button




➔ Exports the captured data encoded in XML format according to the structure required by BCL.

*By default this button is **disabled** and it is **Blur**. You will be able to export a report only when you will have verified your captured data by clicking the **Data validity** button from the step above. If an error doesn't occur during validation, the button automatically will be enabled. The button's availability is indicated instantly by two colors red/green after clicking the **Data Validity Verification** button.*



## 10. Error Cases

 <span style="font-size: 2em; font-weight: bold; color: green;">TABLE</span>			
Item	Country	Data Type	Reported Amount
1-RE0010	XX	AMT	10.000,00
1-RE0020	LU	AMT	-5.000,00
1-RE0030	DE	AMT	7.500,00
1-RE0040	XX	AMT	6.500,00
1-RE0050	LU	AMT	12.000,00

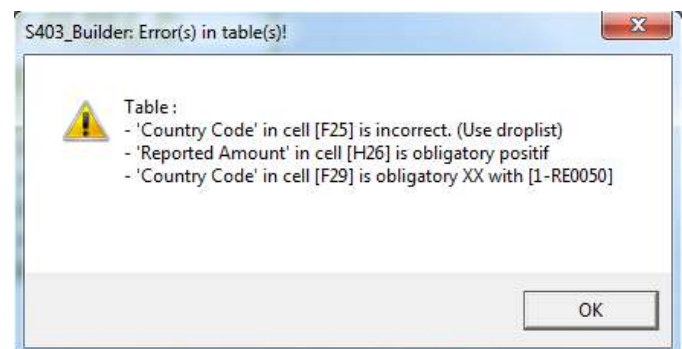
→ There are two possible errors that can occur in the Assets/Liabilities table. **PASTING** either a wrong country code or/and a wrong Currency code.

For some specific items, there are restricted values that can be selected for the fields Country and Currency and are limited to the [XX] and [XXX] values.

This is the mandatory format for these cells. In order to don't cause an error they should be selected from the cell's list.

→ In case of a wrong value, the cell's border changes to **RED** to indicate that an error occurred in this cell.

Click on the **Validate data** button to check the validity of the data captured.

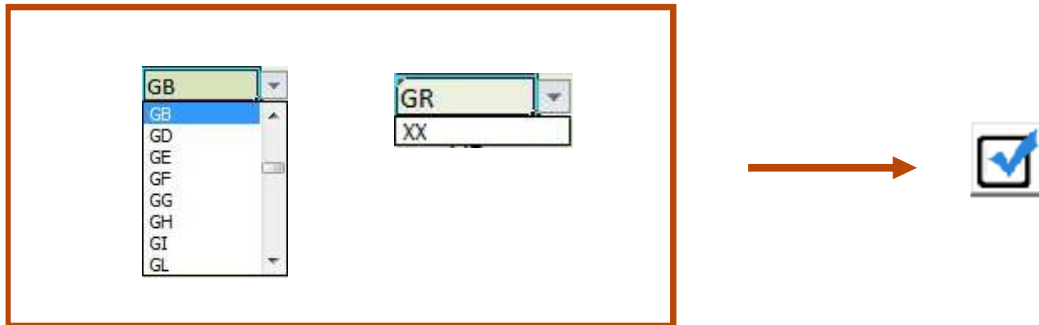


→ The result window appears detailing the errors found.

*One line per detected error is displayed.*

*The user must then:*

- *For all the red bordered cells, click on them and this time, select values from the cell's drop lists. When the cells' value will be corrected the cells' borders will turn into a green color. Now test again your data by clicking the Validation button/*
- *If there is no error, the **export S403** button will be enabled in order to export the S403 report.*



→ The values are correct and now the report can be generated

Open S403

S0403-L\_L0\_201512\_ASS0012345\_ASS0012345\_20160125\_001.xml

Export S403


TABLE			
Item	Country	Data Type	Reported Amount
1-RE0010	LU	AMT	10.000,00
1-RE0020	LU	AMT	5.000,00
1-RE0030	DE	AMT	7.500,00
1-RE0040	XX	AMT	6.500,00
1-RE0050	XX	AMT	12.000,00

The S403 Export button is no longer blur. It is enabled and it can be clicked.

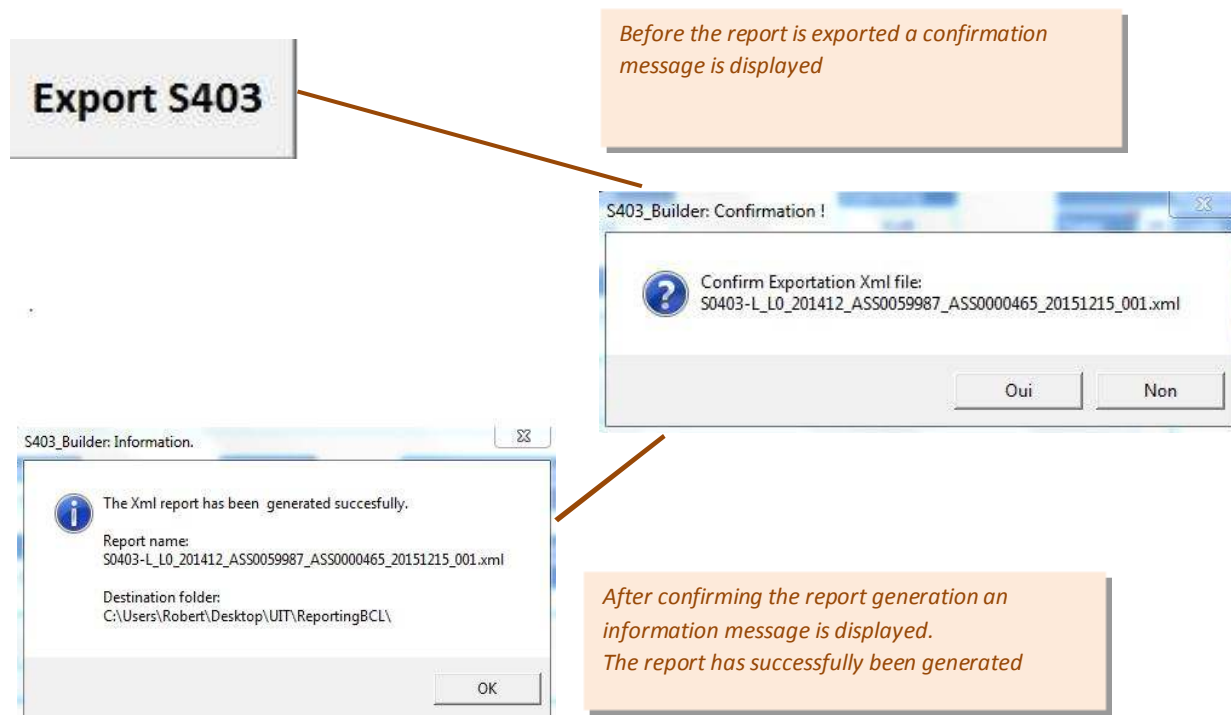
Data is validated structurally and meet the criteria of the BCL.

## 11. Export the S403 report

### I. No errors detected

After clicking the Validation Data Button and no errors are detected, the export button is enabled. 

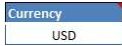
Click the **export S403** button to generate the report




## 12. Tables - global view

### Information and rules of section Data

- For the cells' explanation or reference just place your cursor on it. A comment will appear.
- First choose an item. Depending on the item, a list of values will be available for country, currency, sector and maturity.
- Every captured reported amount, should be in the currency defined at the header.

If the report is calculated in  the  for the captured items should have already been converted and simply be inserted in this field in dollars.

 <span style="font-size: 2em; font-weight: bold;">TABLE</span>			
Item	Country	Data Type	Reported Amount

#### **Item :**

The asset's code.

*Ex : 1-RE0010 = Assets, Funds*

#### **Country :**

The issuing country code.

2-character code according to ISO-3166.

*Ex : LU = Luxembourg*

#### **Reported amount :**

Value corresponding to the amount of the item.

The amount must be converted into the currency of the report. (Currency value in Header)

### 13. Encoding

## TABLE

Item	Country	Data Type	Reported Amount

Item	Co
1-RE0010	
1-RE0020	
1-RE0030	
1-RE0040	
1-RE0050	

Choose an Item from those proposed in the list.

Depending on the chosen item, the choices are limited to a specific list of values (for: country, currency, sector and maturity). **For the S403, there are no Asset or liabilities, there is only one table.**

## TABLE

Item	Country	Data Type	Reported Amount
1-RE0040	XX	AMT	

Country
LU
LY
MA
MC
MD
ME
MF
MG

## 14. Insert new lines

TABLE			
Item	Country	Data Type	Reported Amount
1-RE0040	XX	AMT	100.000,00

To add a new line simply go to the "Reported amount" column and press TAB.



Item	Country	Data Type	Reported Amount
1-RE0040	XX	AMT	100.000,00

## 15. Item Occurrences

Code	Description
1-RE0010	Premiums
1-RE0020	Claims
1-RE0030	Commissions
1-RE0040	Total of Assets of the Balance sheet
1-RE0050	Life insurance technical reserves (if applicable)

## 16. Delete one or more lines



→ Use the DELETE buttons to delete one or more rows of a table.

Select

### TABLE

Item	Country	Data Type	Reported Amount
1-RE0010	LU	AMT	10.000,00
1-RE0020	LU	AMT	5.000,00
1-RE0030	DE	AMT	7.500,00
1-RE0040	XX	AMT	6.500,00
1-RE0050	XX	AMT	12.000,00

Click !

The entire line is self-selected

### TABLE

Item	Country	Data Type	Reported Amount
1-RE0010	LU	AMT	10.000,00
1-RE0020	LU	AMT	5.000,00
1-RE0030	DE	AMT	7.500,00
1-RE0040	XX	AMT	6.500,00
1-RE0050	XX	AMT	12.000,00

S403\_Builder: Please confirm.

Are you sure you want to delete your selection: [E26:H26] from the table ?

The selected line has been deleted

### TABLE

Item	Country	Data Type	Reported Amount
1-RE0010	LU	AMT	10.000,00
1-RE0030	DE	AMT	7.500,00
1-RE0040	XX	AMT	6.500,00
1-RE0050	XX	AMT	12.000,00



**Other examples of selection + DELETE button :**

Item	Country	Data Type	Reported Amount
1-RE0010	LU	AMT	10.000,00
1-RE0030	DE	AMT	7.500,00
1-RE0040	XX	AMT	6.500,00
1-RE0050	XX	AMT	12.000,00

Item	Country	Data Type	Reported Amount
1-RE0010	LU	AMT	10.000,00
1-RE0030	DE	AMT	7.500,00
1-RE0040	XX	AMT	6.500,00
1-RE0050	XX	AMT	12.000,00

➔ If the delete button is double clicked all the lines are selected and if you click again they are deleted

Item	Country	Data Type	Reported Amount
1-RE0010	LU	AMT	10.000,00
1-RE0020	LU	AMT	5.000,00
1-RE0030	DE	AMT	7.500,00
1-RE0040	XX	AMT	6.500,00
1-RE0050	XX	AMT	12.000,00

➔ If an item is not selected or a line is missing when you click the delete button automatically the whole line is deleted from the table.

Item	Country	Data Type	Reported Amount
1-RE0010	LU	AMT	10.000,00
1-RE0030	DE	AMT	7.500,00
1-RE0040	XX	AMT	6.500,00
1-RE0050	XX	AMT	12.000,00

## 17. Copy data from another source :

When the user copies / pastes data from Excel to Excel sheets or from a text file source to Excel, the separator is the TAB.

A	B	C	D
1-RE0010	LU	AMT	10000
1-RE0020	LU	AMT	5000
1-RE0040	XX	AMT	6500
1-RE0050	XX	AMT	12000

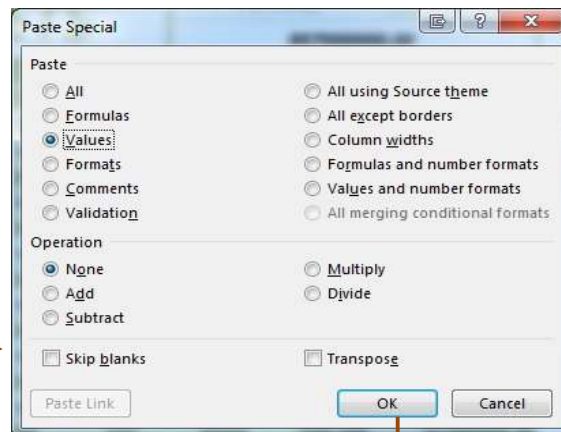
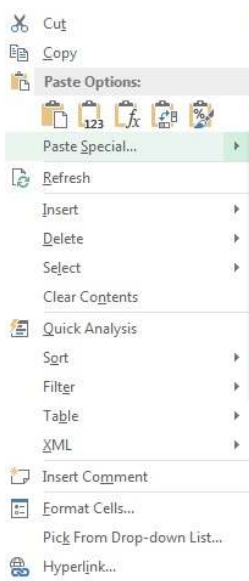
```

1-RE0010    LU    AMT    10000
1-RE0020    LU    AMT    5000
1-RE0040    XX    AMT    6500
1-RE0050    XX    AMT    12000
    
```



Item	Country	Data Type	Reported Amount
------	---------	-----------	-----------------

Blocnote / Notepad :  
Separators **must** be tabs !



Excel:  
Right mouse button to paste values.

Item	Country	Data Type	Reported Amount
1-RE0010	LU	AMT	10.000,00
1-RE0020	LU	AMT	5.000,00
1-RE0040	XX	AMT	6.500,00
1-RE0050	XX	AMT	12.000,00

# Excel options & Settings

The macros can be enabled or activated .Three scenarios are possible.  
Screenshots can change depending on your version of Excel – this documentation was done using Excel 2010.

## 1. Macros accepted

The file opens without any error message or warning .

→ Macros are accepted by default

If Excel displays a warning window "Can not run the macro ..."

→ See the next point.

## 2. Macros disabled

The file opens but displays a warning message when a macro is executed.

2 choices are possible:

→ Enable Macros in Excel level .

→ Suggest activation of macros when opening the file.

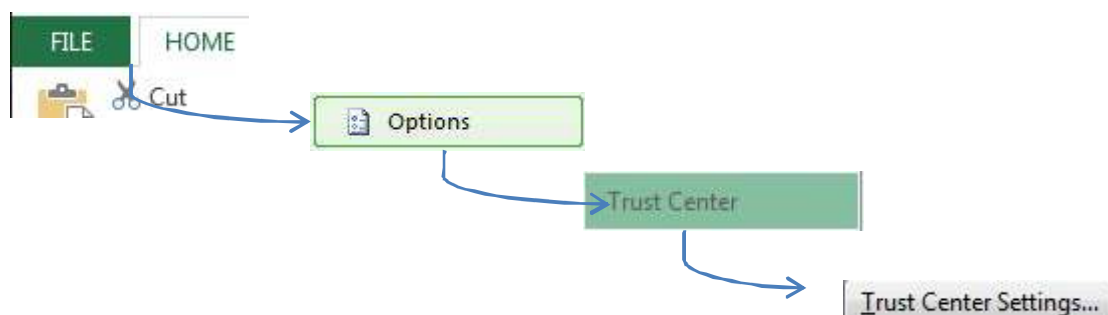
*Once a macro is executed, the following message appears :*

→ The following screen shot shows an example of S216 builder, but the principal does apply to any other macros and specially to S403 builder.



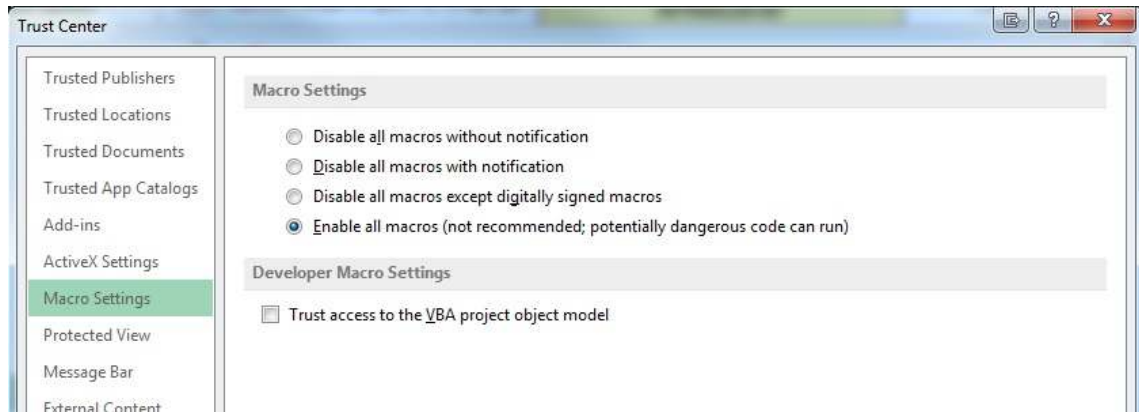
→ See the " Management Center of Excel confidentiality"

- Click on "File" in the top left tab.
- Click on " Excel Options ."
- Select " Trust Center "
- Click on "Trust Center Settings.. "



→ Enable macros by default:

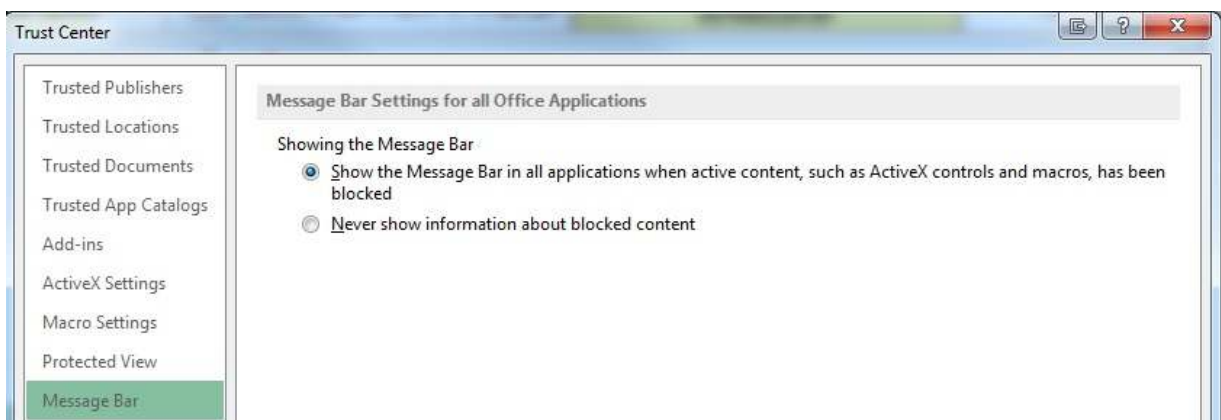
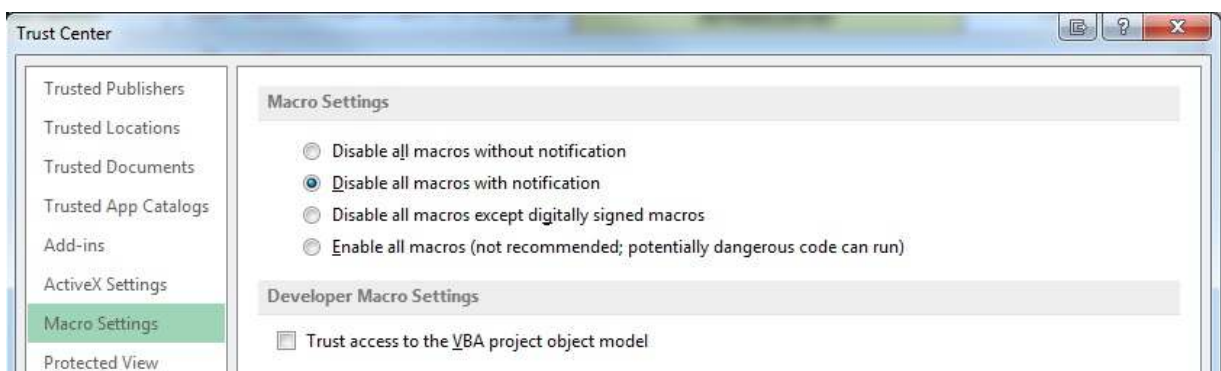
- Select " Macros Settings " in the left column.
- Select "Enable all macros ...".
- Click on "OK" twice.



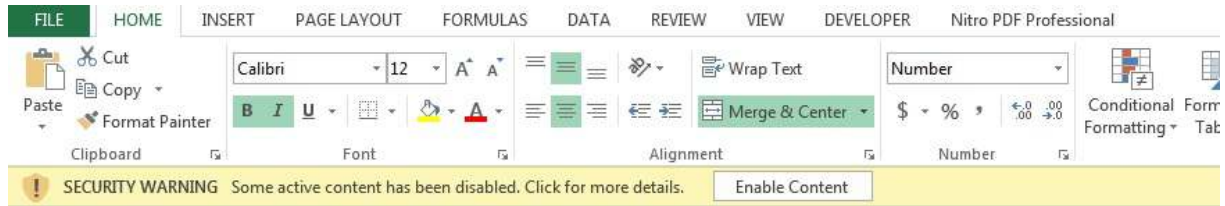
**! Caution: This option configures and enables by default all macros at this Excel installation.**

→ Enable Macros on request

- Select " Macro Settings " in the left column.
- Select " Disable all macros with notification ."
- Select " Message Bar " in the left column.
- Select " Show the Message Bar ...".
- Click "OK" twice.



→ The following message will appear each time you load a file containing macros



→ Message bar :

- Click on the " Enable Content " to enable Macros for the proper functionality of the S403\_Builder

**! This option will activate the macro each time you open a file.**

### 3. Invitation to allow macros

Excel is warning that the file uses macros and offers the possibility to enable them for this document. That's how Excel reacts by default or if the "Enable macros on demand" option was selected.

*Upon opening the file, shows the following message:*

SECURITY WARNING Some active content has been disabled. Click for more details. Enable Content

Click « Enable content »



→ Security Warning :

- Click on" Enable content ."
- Click on "Yes"

## Best Practises

### 1. Tips

---

The users can copy paste this section either print it and have it somewhere close to them while using the macro. Below we will refer to some Tips that will help any user masterize this macro from the very first time that they will try to conduct a S403 report.

- A) Create a backup of the original file somewhere safe. It is everybody's responsibility to have the original version of their tool in case it gets destroyed or deleted by a mistake.

When you will use this macro for first time there are popup comments indicating each field's information. After getting used to the macro's functionality the comments can be disabled from the Admin Button in the Options Tab

- B) Always Set the Headers data before conduct any report.

- Be sure that the fields currency and End Month's Date are set correctly corresponding to your needs. You wouldn't like to generate a report in USD currency if actually you wanted to do it in EUR for example, especially report for a wrong date.
- Define correctly who the Declarant is and who the Reporter is. After fill in the appropriate codes.

- C) While filling the tables' data is good to remember:

- Press the TAB button from the last cell of the last line of the table you would like to use. After you will have your new line available to capture/paste your data.
- Be careful while pasting data. It is possible to have added an item and finally paste a wrong amount in the Reported amount cell just because the copy wasn't correct and the mouse's buffer still kept the previous amount copied a bit before.
- All the values that you will need to add to the Assets/Liabilities tables are included in the drop lists of each line. Click on the cells to display these lists.
- It is useful to disable the system's thousands/decimals separators. To do this just go to Excel's options => Advanced=> Editing options => unclick the system's separators check box.
- In order to delete a whole line click the delete button with the trash icon. For simply deleting a cell's value use the keyboard's delete button.
- In order to export any report it is important to have added in each table a total item. These are the 1-000000/2-000000 for Assets/Liabilities respectively. They should represent the total calculated amount of each table. So you can click the copy to x-000000 button above the TOTAL amount of the tables' headers to copy its value to your total item x-000000. Like this you will be sure that the declared amounts are correct.

Following these simple steps the number of error or warning messages that will be displayed will be reduced.