

9. Admin functions

S219 Builder

10. Help contact info

U IT



1. Customer information

U IT insurance Corp

License granted to the company 'TRIAL VERSION' until 2016/12/31 included.

2. Language selection

Layout 0 v 1.0




8. Open S219 XML report

Version	1.0	End Month Date	2015-12-31	Currency	EUR	Reporter	
Creating Date	2016-05-30T15:18:04	Closing Date	2015-12-31	Layout	0	Type	39
						Code	0012345
						Declarant	
						Type	39
						Code	0012345


Open S219

S0219-L_L0_201512_ASS0012345_ASS0012345_20160524_001.xml

Export S219

ASSETS

Item	Country	Currency	Sector	Init/Resi Maturity	Reported Amount
------	---------	----------	--------	--------------------	-----------------

LIABILITIES

Item	Country	Currency	Sector	Initial Maturity	Reported Amount
------	---------	----------	--------	------------------	-----------------


7. Quick reminder / help

6. Enhanced control checkbox

5. Intelligent capture & auto-filling

4. Enhanced eraser function

3. Protected export function



1. Customer information

Visibility

Consolidation

Declarant company name can be set by the user, one copy of the tool by issuer
Yearly licensing of the tool includes now any major update required by the regulators



One directory and one copy by company. Keep your captured data from months to months

2. Language selection

Interface

Choose between English / French languages
Full translation (text buttons, comments, infos / warnings / error messages)



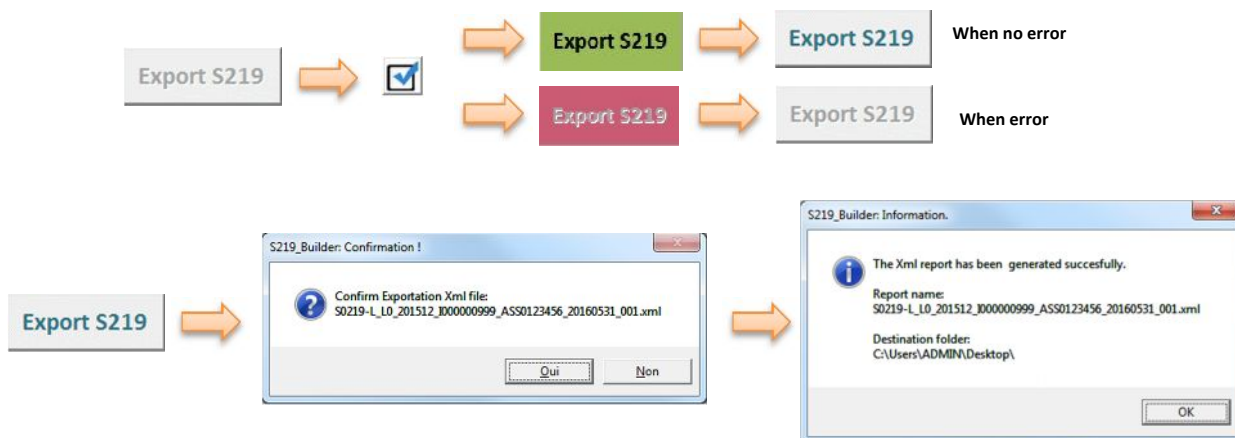
3. Protected export function

Consolidation

Visibility

Consolidation

Button is only available after a successful "Checkbox verification"
Button will flash green or red depending on check results
No export possible if the macro spots at least one error



4. Enhanced eraser function

Interface

Interface

Delete item lines easily in 1 clic
Double clic the icon to remove all the line of a table



5. Intelligent capture & auto-filling

Interface
Interface

Auto-complete mandatory fixed data based on item category chosen
Narrow choice list depending on the item category

ASSETS					
Item	Country	Currency	Sector	Init/Resi Maturity	Reported Amount
1-006000					
1-007000					

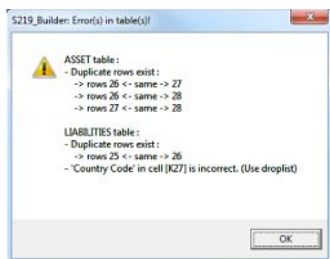


ASSETS					
Item	Country	Currency	Sector	Init/Resi Maturity	Reported Amount
1-007000	XX	XXX	90000	1999-999	

6. Enhanced control checkbox

Consolidation
Consolidation
Visibility

Complete verification : captured values, Totals, difference of Totals, occurrences of items
Export button is enabled only if no error found
On error : Export button disabled
Displays relevant error text
Highlight errors in the tables



Open S219	S0219-L_L0_201512_000000999_ASS0123456_20160531_001.xml	Export S219
-----------	---	-------------

ASSETS					
Item	Country	Currency	Sector	Init/Resi Maturity	Reported Amount
1-006000	XX	XXX	90000	1999-999	900,00
1-007000	XX	XXX	90000	1999-999	10.000,00
1-007000	XX	XXX	90000	1999-999	10.000,00
1-007000	XX	XXX	90000	1999-999	100.000,00

LIABILITIES					
Item	Country	Currency	Sector	Initial Maturity	Reported Amount
2-011000	XX	XXX	90000	1999-999	4.587,00
2-011000	XX	XXX	90000	1999-999	50.000,00
2-012110	XX	XXX	90000	1999-999	150.000,00

7. Quick reminder / help

Interface

Position cursor on top of fixed cells or column name displays useful information

Item	Item
	1-006000 - Non-financial assets
	1-007000 - Financial derivatives



Rubrique	Rubrique
	1-006000 - Actifs non financiers
	1-007000 - Instruments financiers dérivés



8. Open S219 XML report

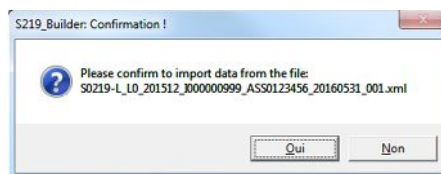
Interface

Browse, open & load any S219 XML report

Open S219



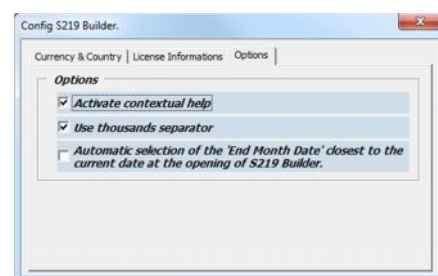
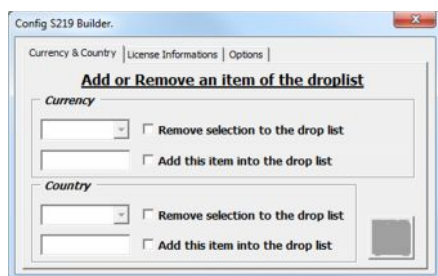
Browse and select
XML report



9. Admin functions

Consolidation
Interface
Options

Allow to add or remove a currency or country code
Displays licence information
Allow content's configuration for comments and calculated amounts



10. Help contact info

Support

Need help ? 1 click contact info window

