

9. Admin functions

10. Help contact info

1. Customer information

2. Language selection

S215 Builder

UIT

U Titrisation Vehicle

License granted to the company 'TRIAL VERSION' until 2016/12/31 included.

Layout 1 v 1.0

Version1.1

End Month Date2016-03-31

CurrencyEUR

ReporterType23Code000002548

Creating Date2016-05-03T13:17:29

Closing Date2016-03-31

Layout1

DeclarantType34Code000002564

8. Open S215 XML report

Open S215

S0215_L1_310320_B000002548_T000002564_20160503_001.xml

Export S215

7. Quick reminder / help

6. Enhanced control checkbox

5. Intelligent capture & auto-filling

4. Enhanced eraser function

3. Protected export function

ASSETS

Item	Country	Currency	Sector	Init/Resi Maturity	Reported Amount
1-006000	AG	XXX	90000	1999-999	-79.854,25
1-007000	AI	XXX	90000	1999-999	-2,00
1-011020	AM	XXX	90000	1999-999	-3,00
1-011040	AO	XXX	90000	1999-999	-4,00
1-011090	GM	XXX	90000	1999-999	-5,00
1-WROWRI	XX	XXX	90000	1999-999	9.999,00

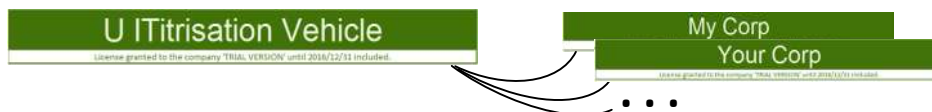
LIABILITIES

Item	Country	Currency	Sector	Initial Maturity	Reported Amount
2-011000	AF	XXX	90000	1999-999	-9,00

1. Customer information

Consolidation
Visibility

Yearly licensing of the tool includes now any major update required by the regulators
Declarant company name can be set by the user, one copy of the tool by issuer

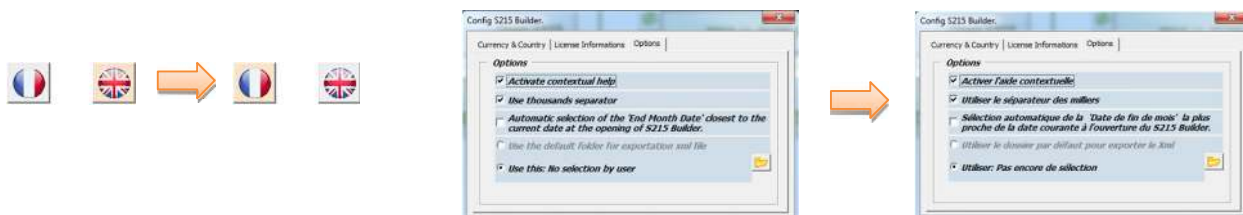


One directory and one copy by company. Keep your captured data from months to months

2. Language selection

Interface

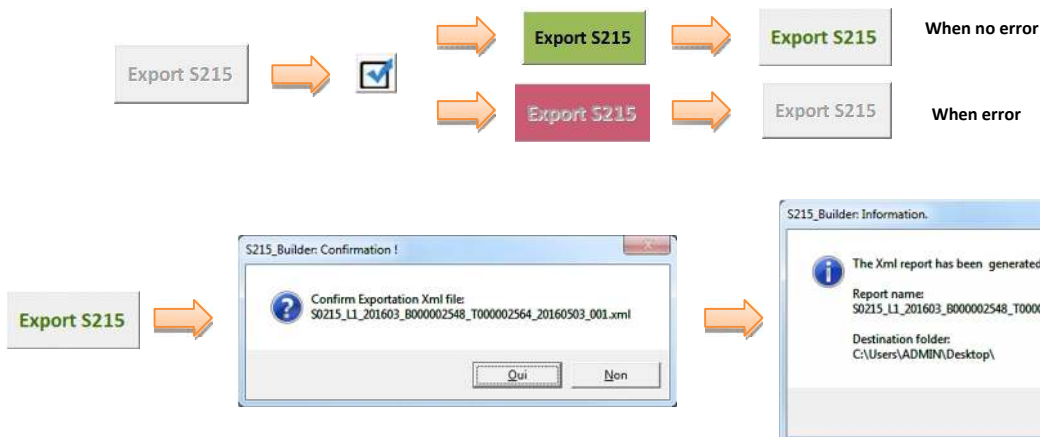
Choose between English / French languages
Full translation (text buttons, comments, info / warnings / error messages, options)



3. Protected export function

Consolidation
Visibility
Consolidation

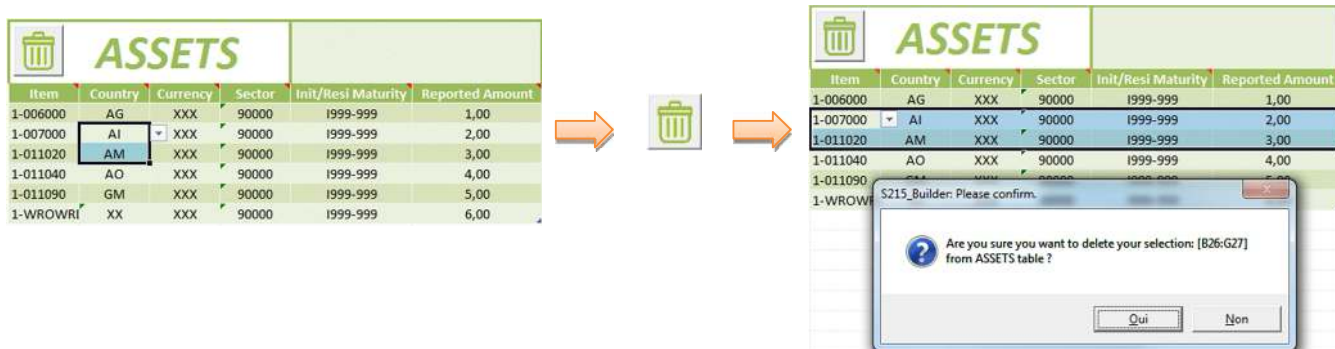
Button is only available after a successful "Checkbox verification"
Button will flash green or red depending on check results
No export possible if the macro spots at least one error



5. Enhanced eraser function

Interface
Interface

Delete item lines easily in 1 clic
Double clic the icon to remove all the line of a table



6. Intelligent capture & auto-filling

Interface
Interface

Auto-complete mandatory fixed data based on item category chosen
Narrow choice list depending on the item category

ASSETS						
Item	Country	Currency	Sector	Init/Resi Maturity	Reported Amount	
1-006000						
1-007000						
1-011020						
1-011040						
1-011090						
1-WROWRD						

ASSETS						
Item	Country	Currency	Sector	Init/Resi Maturity	Reported Amount	
1-WROWRD	XX	XXX	90000	1999-999		

7. Enhanced control checkbox

Consolidation
Consolidation
Visibility

Complete verification : captured values, Totals, difference of Totals, occurrences of items
Export button is enabled only if no error found
On error : Export button disabled
Displays relevant error text
Highlight errors in the tables

S215_Builder: Error(s) in table(s)!

ASSET table:
- 'Reported Amount' in cell [G25] : is obligatory to be positive with the item [1-WROWRD]

OK

Open S215

S0215_L1_201509_5000008974_T000123456_20160903_001.xml

Export S215

ASSETS						
Item	Country	Currency	Sector	Init/Resi Maturity	Reported Amount	
1-WROWRD	XX	XXX	90000	1999-999	-9,000.00	

☒

LIABILITIES						
Item	Country	Currency	Sector	Initial Maturity	Reported Amount	
2-011000	LU	XXX	90000	1999-999	4.00	

8. Quick reminder / help

Interface

Position cursor on top of fixed cells or column name displays useful information

Item	Item
1-006000	- Non-financial assets
1-007000	- Financial derivatives
1-011020	- Other securitised assets
1-011040	- Other securitised assets
1-011090	- Other securitised assets
1-WROWRD	- Allows the collection of data on write-offs/write-downs of assets that are recorded in the balance sheet under items 1-010010 to 1-010060 «Securitised loans» at nominal value.

Rubrique	Rubrique
1-006000	- Actifs non financiers
1-007000	- Instruments financiers dérivés
1-011020	- Autres actifs titrisés
1-011040	- Autres actifs titrisés
1-011090	- Autres actifs titrisés
1-WROWRD	- Recueille les abandons et/ou réductions de créances titrisées enregistrées à l'actif du bilan dans les rubriques 1-010010 à 1-010060 «Créances titrisées» à la valeur nominale.

9. Open S215 XML report

Interface

Browse, open & load any S215 XML report

Open S215

Browse and select XML report

S215_Builder: Confirmation !

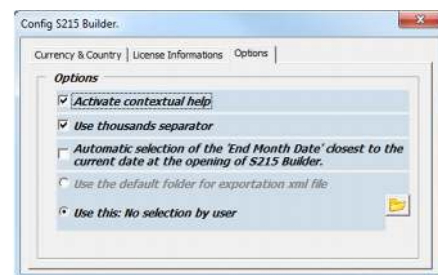
Please confirm to import data from the file:
S0215_L1_201509_5000008974_T000123456_20151209_001.xml

Qui Non

10. Admin functions

Consolidation
Interface
Options

Allow to add or remove a currency or country code
Displays licence information
Allow content's configuration for comments and calculated amounts



11. Help contact info

Support

Need help ? 1 click contact info window

