

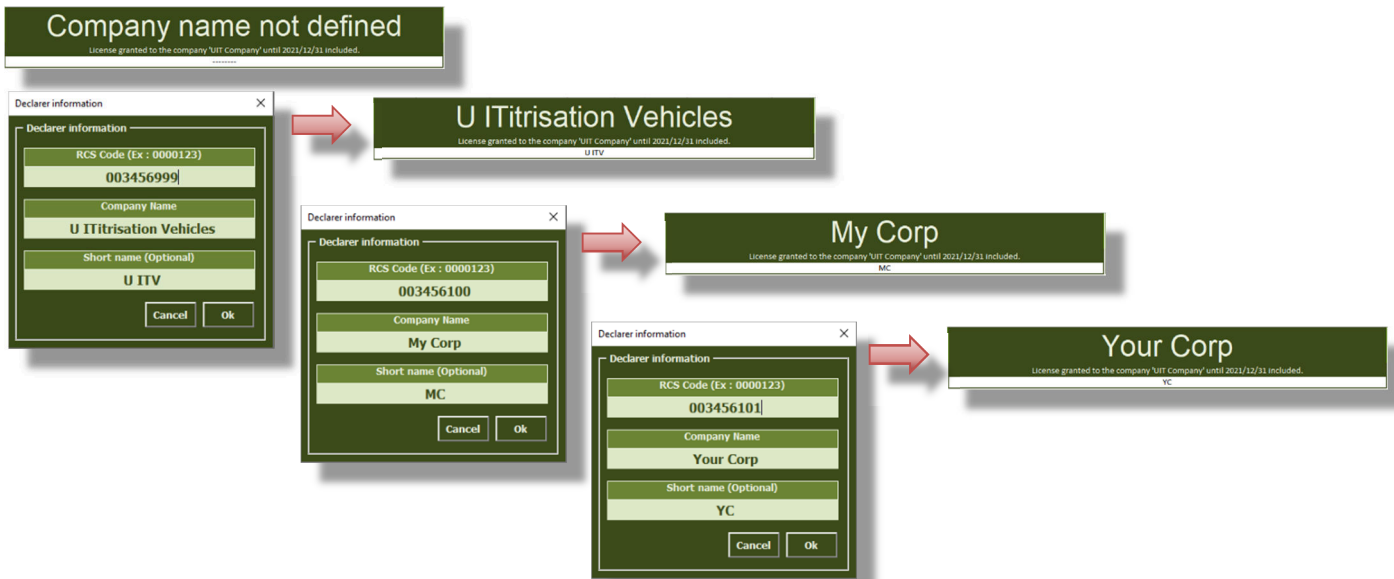
## 1. Customer information

Visibility

Consolidation

Company name can be set by the user, one copy of the tool by issuer

Yearly licensing of the tool includes now any major update required by the regulators

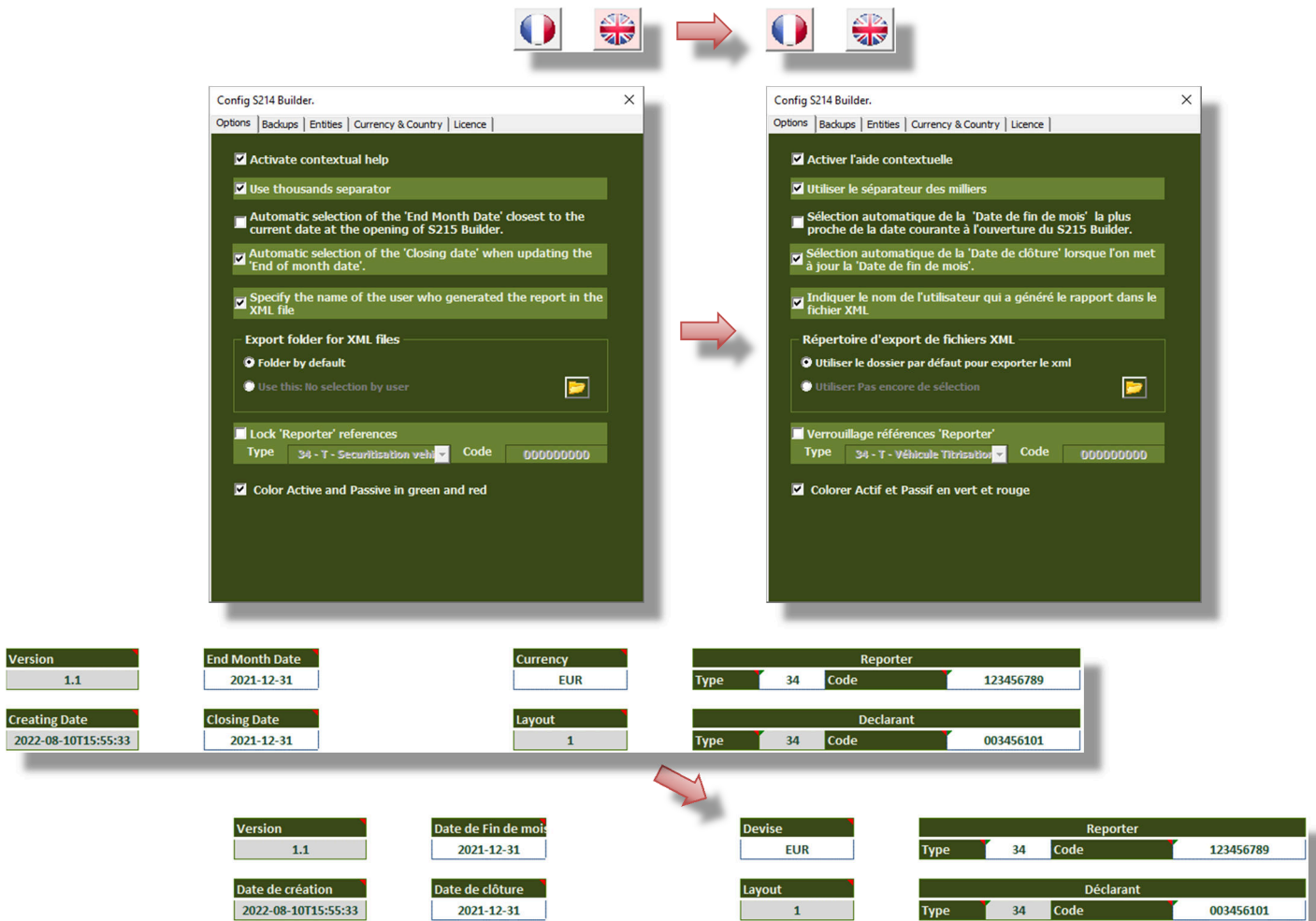


## 2. Langage selection

Interface

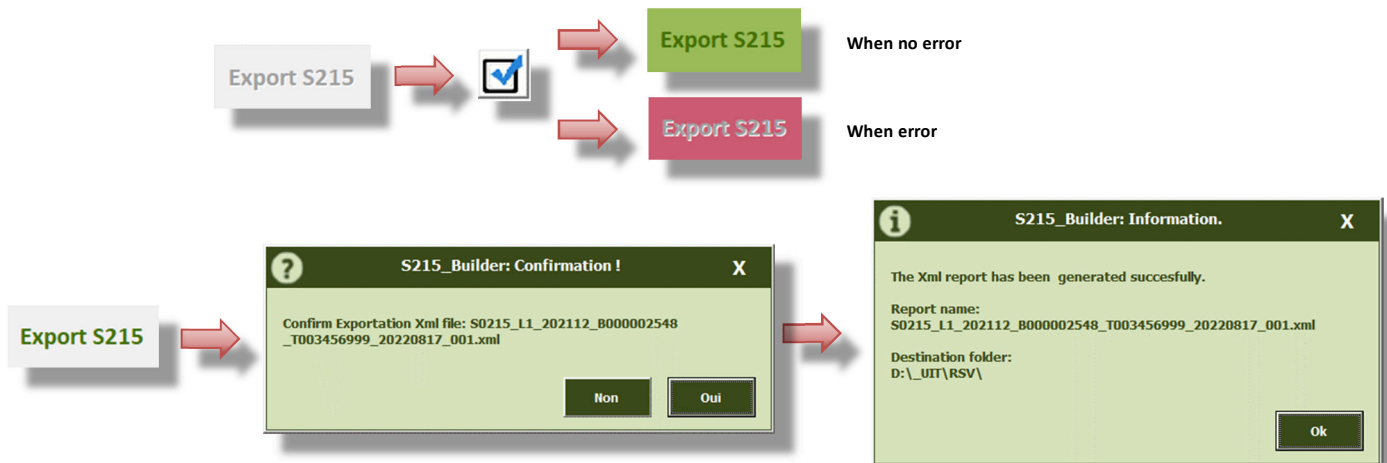
Choose between English / French languages

Full translation (text buttons, comments, infos / warnings / error messages)



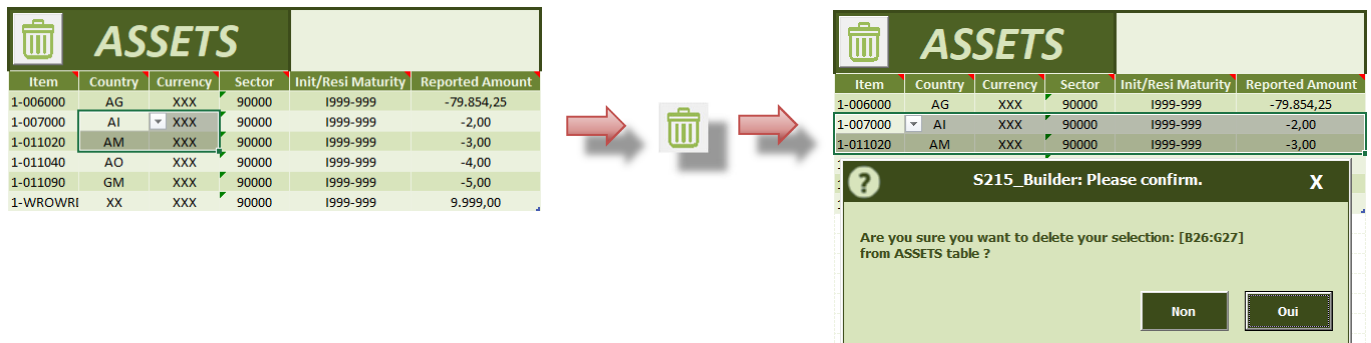
### 3. Protected export function

Consolidation Visibility Consolidation  
 Button is only available after a successful "Checkbox verification"  
 Button will flash green or red depending on check results  
 No export possible if the macro spots at least one error



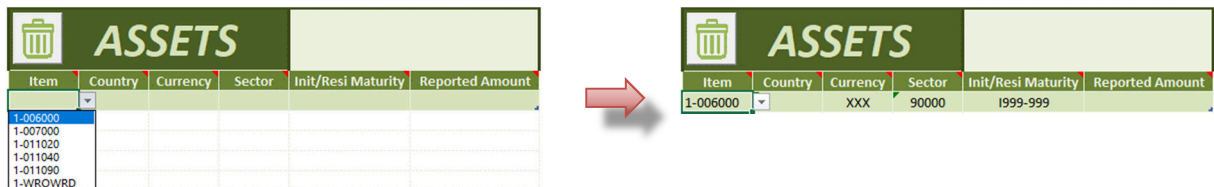
### 4. Enhanced eraser function

Interface Interface  
 Delete item lines easily in 1 clic  
 Double clic the icon to remove all the line of a table



### 5. Intelligent capture & auto-filling

Interface Interface  
 Auto-complete mandatory fixed data based on item category chosen  
 Narrow choice list depending on the item category



## 6. Enhanced control checkbox

Consolidation  
Consolidation  
Visibility

Complete verification : captured values, Totals, difference of Totals, occurrences of items

Export button is enabled only if no error found

On error :

Export button disabled

Displays relevant error text

Highlight errors in the tables

The screenshot shows an error dialog box titled "S215\_Builder: Error(s) in table(s)!" with the following text: "ASSET table : - For the 'Currency code' in cell [D26] is obligatory to insert the [XX] value for the Item [1-007000] - 'Country Code' in cell [C30] is obligatory to insert the [XX] value for the Item [1-WROWRD]". An arrow points from this dialog to the main interface, which shows the "ASSETS" and "LIABILITIES" tables. The "Export S215" button is disabled, and the error text is displayed in the interface.

## 7. Quick reminder / help

Interface

Position cursor on top of fixed cells or column name displays useful information

Item	Item
1-006000	1-006000 - Non-financial assets
1-007000	1-007000 - Financial derivatives
1-011020	1-011020 - Other securitised assets
1-011040	1-011040 - Other securitised assets
1-011090	1-011090 - Other securitised assets
1-011040	1-WROWRD - Allows the collection of data on write-offs/write-downs of assets that are recorded in the balance sheet under items 1-010010 to 1-010060 «Securitized loans» at nominal value.
1-011090	

Country	Country
AG	Must be sole according to the country of residence or the country of the registered office of a counterpart with a two-character ISO code 3166.
AI	In addition to the ISO 3166 country codes, the following specific country codes may be used:
AM	XA - European Central Bank (ECB)
AO	XB - International institutions, except European institutions, located outside Luxembourg
GM	XC - International institutions, except European institutions, located in Luxembourg
XX	XD - European institutions located in Luxembourg
	XE - European Investment Bank (EIB)
	XG - European institutions located outside Luxembourg, except ECB
	XI - European Stability Mechanism (ESM)
	XJ - European Financial Stability Fund

Rubrique	Rubrique
1-006000	1-006000 - Actifs non financiers
1-007000	1-007000 - Instruments financiers dérivés
1-011020	1-011020 - Autres actifs titrisés
1-011040	1-011040 - Autres actifs titrisés
1-011090	1-011090 - Autres actifs titrisés
1-011040	1-WROWRD - Recueille les abandons et/ou réductions de créances titrisées enregistrées à l'actif du bilan dans les rubriques 1-010010 à 1-010060 «Créances titrisées» à la valeur nominale.
1-011090	

Pays	Pays
AG	Sont à ventiler selon le pays de résidence ou du siège social de la contrepartie à l'aide du code ISO 3166 à deux caractères. Outre les codes pays ISO 3166, les codes pays spécifiques suivants peuvent être utilisés.
AI	XA - Banque centrale européenne (BCE)
AM	XB - Institutions internationales, hors institutions européennes, ayant leur siège hors du Luxembourg
AO	XC - Institutions internationales, hors institutions européennes, ayant leur siège au Luxembourg
GM	XD - Institutions européennes ayant leur siège au Luxembourg
XX	XE - Banque Européenne d'Investissement (BEI)
	XG - Institutions européennes, hors BCE, ayant leur siège hors du Luxembourg
	XI - Mécanisme européen de stabilité (MES)
	XJ - Fonds européen de stabilité financière

## 8. Open S215 XML report

Interface

Browse, open & load any S215 XML report

Open S215

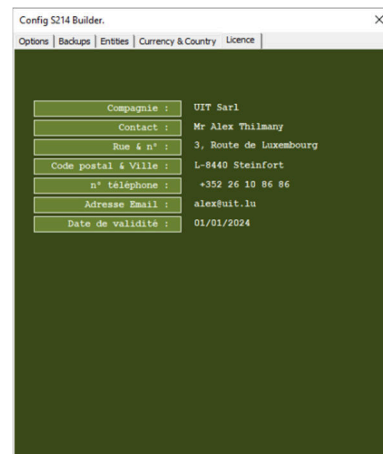
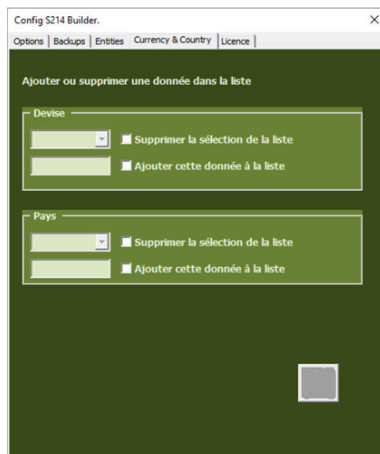
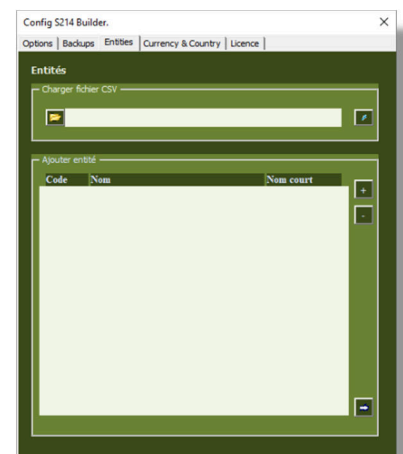
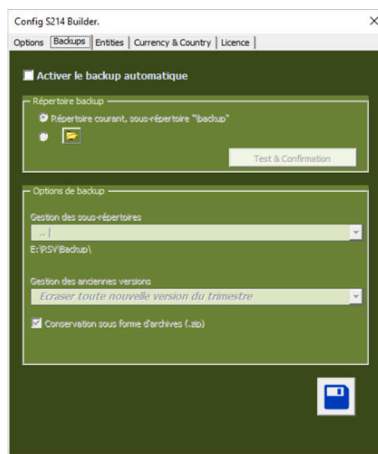
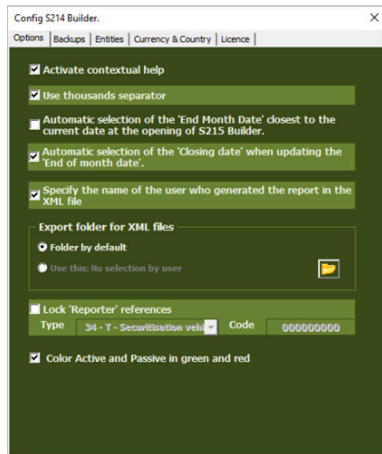
Browse and select  
XML report

The screenshot shows a confirmation dialog box titled "S215\_Builder: Confirmation !" with the following text: "Data are present into a table. Please confirm to replace data with imported data from: S0215\_L1\_202112\_B000002548\_T003456999\_20220817\_001.xml". There are "Non" and "Oui" buttons at the bottom.

9. Admin functions

Consolidation  
Interface  
Options

Allow to add or remove a currency or country code  
Displays licence information  
Allow content's configuration for comments and calculated amounts



10. Help contact info

Support

Need help ? 1 click contact info window

