

RSV GUI – S214 Builder Documentation

U IT Support Team communication
@ support@uit.lu / +352 26 10 86 86

S214 Builder Documentation

Version	Date	Project
V 3.0	2023	RSV GUI

RSV GUI

S214 Builder

Version 3.0 – Release 2023

Documentation

Table of Contents

Table of Contents	2
System Requirements	3
Section Header	4
Header Information	4
Administration button	4
Options TAB	5
Backups TAB	6
Entities TAB	8
Currency & Country TAB	9
License TAB	9
U IT Button	10
Language Button	10
Detailed header data	11
Tool Section	12
Tools & functions overview	12
Open S214 button	13
Refresh filename button	14
« Check » button	14
Summary view	14
Check Ok	14
Check Not Ok	15
« Export S214 » button	17
« Cross-Check » with monthly TPT report	18
TPTTBS does not match	18
TPTIBS matches	19
Data Section	20
Tables - global view	20
Encoding	21
Insert new lines	21
Item Occurrences	22
Delete one or more lines	22
Copy data from another source	25
The "TOTAL" field	26
Case scenarios	26
Contextual copy buttons	28
Excel & Windows options & Settings	29
Access the Trust Center of Excel	29
Trust Center → Macros Settings	30
Trust Center → Message bar	31
Trust Center → Trusted Documents	31
Standard Windows protection - unlocking a file	32
Quick tips	33

System Requirements

The RSV GUI are compatible with Excel 2010, 2013, 2016, 2019 & 2021.
Older office versions (2000, 2002, 2003, 2007) are not supported.

Office / Excel 2010

Requires Service Pack 1 or Service Pack 2.

Office / Excel 2013

Runs on original version or Service Pack 1.

Office / Excel 2016, 2019 & 2021

Runs fine on these versions of excel. No unresolvable issue met since – usual problems are often caused by limited rights or too high security settings.

In case of problem using the tool :

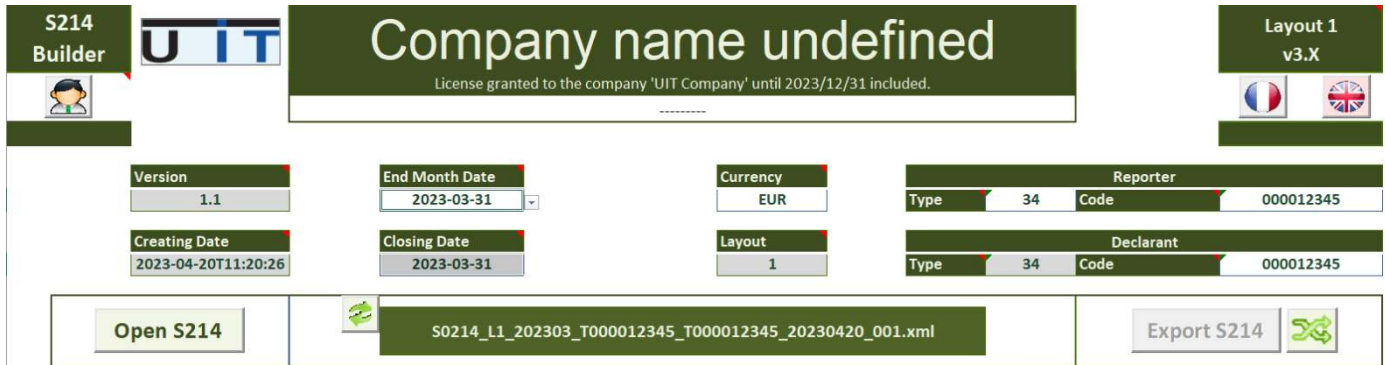
- Contact first your IT, usual problems are caused by limited rights & security settings
- Contact us or ask your IT to contact us.

Reference table of exact Excel versions compared with their common yearly denomination:

Release year	Common name	Version	Included in office
1999	Excel 2000	v9.0	Office 2000
2001	Excel 2002	v10.0	Office XP
2003	Excel 2003	v11.0	Office 2003
2007	Excel 2007	v12.0	Office 2007
2010	Excel 2010	v14.0	Office 2010
2013	Excel 2013	v15.0	Office 2013 & Office 365
2016	Excel 2016	v16.0	Office 2016 & Office 365
2019	Excel 2019	v16.0	Office 2019 & Office 365
2021	Excel 2021	v16.0	Office 2021 & Office 365

Section Header

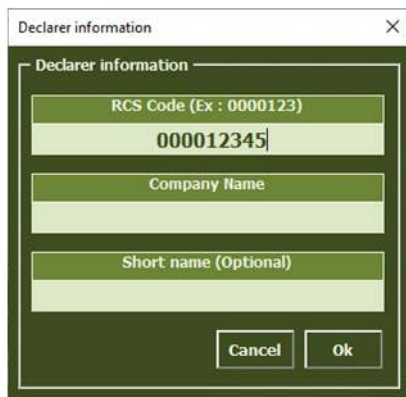
Header Information



Place the cursor over the green titles to display explanatory information about those fields. In this section only the white fields can be modified by the user. The grey fields cannot be modified.

The **Company name** can be changed by clicking on the field and modify the text :

The following window will pop-up :



Fields will be pre-filled if already set.

Use this screen to modify the information. If you select or enter a wrong RCS code which is not part of your license list, a warning message will be displayed, preventing to save wrong data.

Explanation of Short Name is detailed in a further chapter.

Administration button

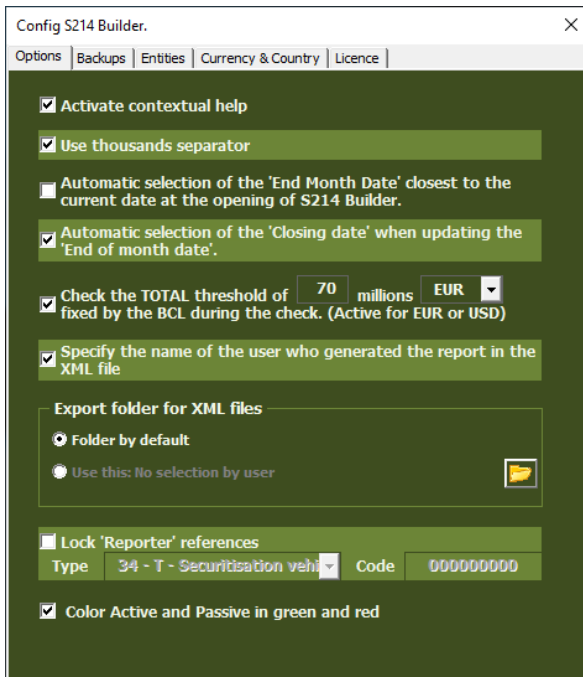


Displays the options & administration panel.

The panel is divided in 5 sections (tabulations – TAB) :

- Options**
- Backups**
- Entities**
- Currency & Country**
- License**

Options TAB



Activate contextual help

Displays comment sections over the fields, providing information/directions to the users.

Use thousands separator

When activated, separates big numbers in thousands by applying a space as a delimiter between the digits. This option helps the user identify easier the length of a long number.

Auto selection of the “End Month Date”

When launching the application, the reporting period : “End of month date” is set to the closest reporting date. For example, if the current date is 22/05/2022 the End of month date will be set to 31/05/2022.

Auto selection of the “Closing Date”

If checked, the tool will automatically update the “Closing Date” when the “End Month Date” is modified by the user.

Check the TOTAL threshold

The tool will calculate the total amounts captured and warn the user if it’s lower than the threshold set. By default, the threshold is set to (standard) 70 million – the value can be modified by the user.

Specify the name of the user who generated the report in the XML file

Set by default. This option allows adding in the comments section of the report, the name of the user (windows session username) who is performing the report’s generation.

Export folder for XML files

Set by default to the same directory than the macro (macro folder). Select the second option and click on the folder icon to set a dedicated or common folder for all entities.

Lock reporter data

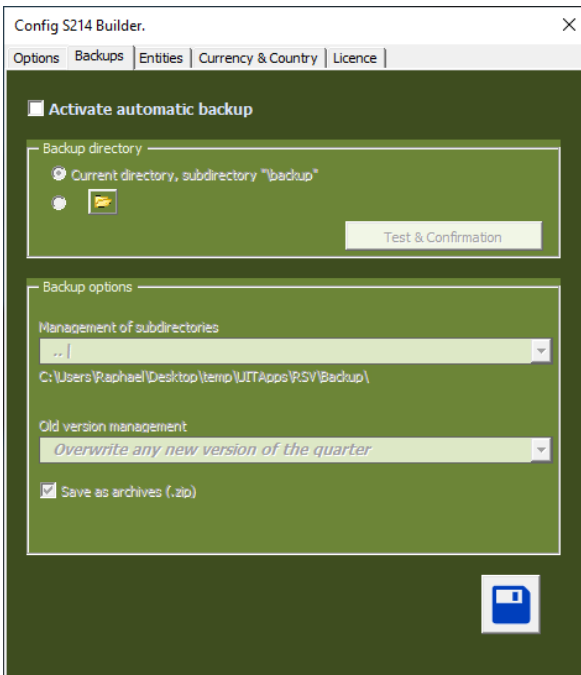
Allow the user to lock the fields “Type” and “Code” of the reporter to prevent to :

- Re-type the Reporter’s code for each entity, each month.
- Commit an error by typing a wrong code.

Active & Passive color

Set by default. Visual preference allowing colorizing the backgrounds cells of Active & Passive cells in Green and Red.

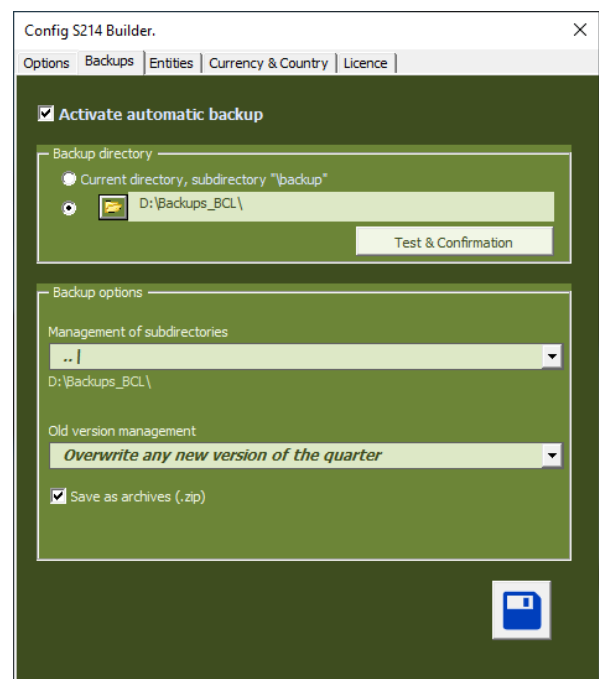
Backups TAB



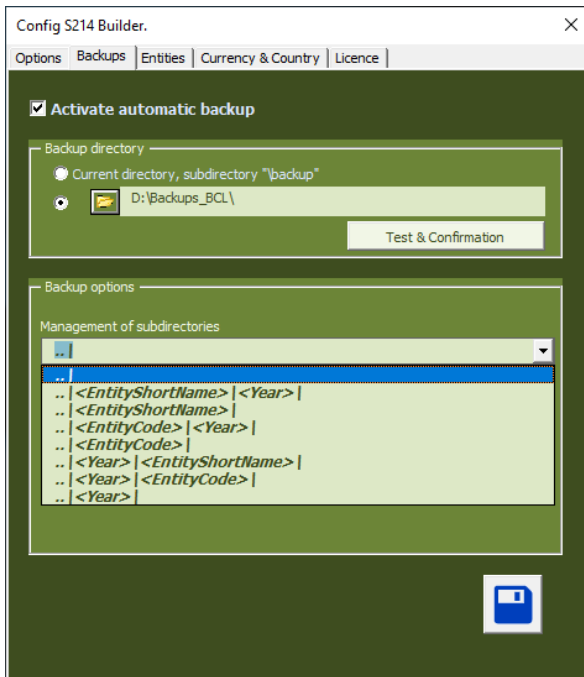
By default, the option is not activated.

When you activate it the default location where the tool will copy the backups will be the subdirectory :
“\backup” from where the macro is located.

Select the second option and click on the folder button to select a directory.



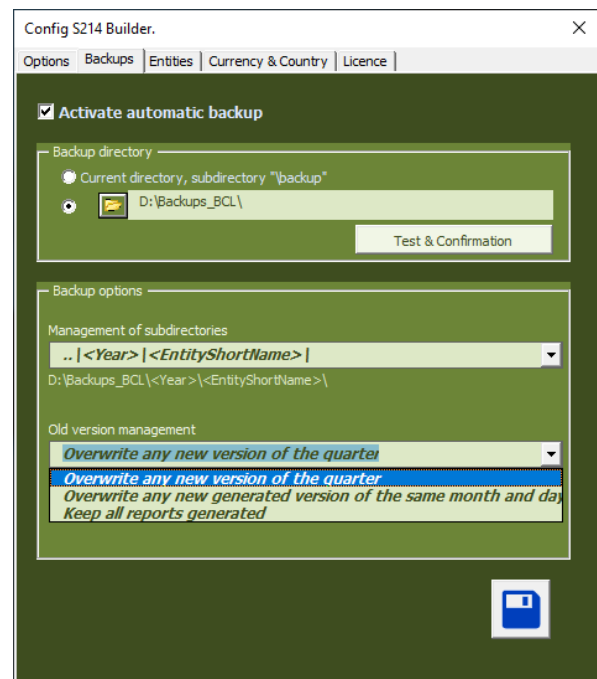
In both cases, click on the “Test & Confirmation” button to verify if the tool has the sufficient rights to write and create sub-directories in the selected directory.



In the backup option section, select one of the proposed options to classify the backups in a pre-determined sub-folder structure.

An example of the directory structure chose is displayed under the selection field.

Choose one of the 3 options available to manage the old version of any report of the same period :



Overwrite any new version of the quarter

Only one backup will be kept by reporting period. This means that the tool will only keep the latest report generated for a specific period. In practice, the backup for one entity for 1 year will be 12 TPTTBS reports and 4 S214 reports.

Overwrite any new generated version of the same month and day

Will perform a backup of all reports generated even for a same reporting period, unless the report is generated a same day. In this case, the tool will keep the latest backup of the day.

Keep all reports generated

Will back up all reports generated, adding a timestamp to the filename of any older version of any report generated.

Last option “Save as archive”. If activated, the tool will store the reports under a ZIP file, one by month.

If one reports for multiple entities and wish to use this backup functionality, it is recommended to configure the backup options on the master copy of each tool. For instance, select a unique backup directory, choose a sub-classification by year then by entity short name, choose your preferred option on how to handle old version then save the changes and use this master copy of the tool to create as many copies as you need.

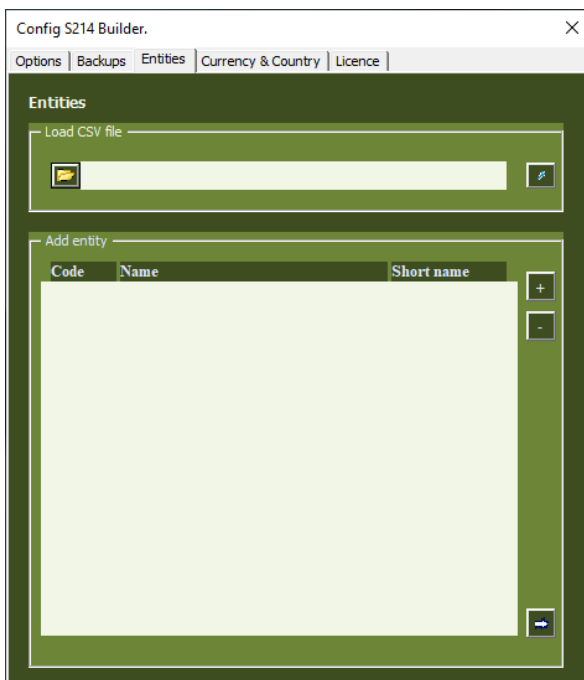
Entities TAB

This panel allows the reporting company to set a correspondence between the company name and its DSE code, it also allows to add a “short name” to reference the entity (see further explanations).

The 2 practical advantages are :

- Automatically update the entity name and short name when selecting or modifying the entity code (DSE)xxxxxxx of the Declarer field.
- Automatically update the entity name and short name when loading a report.

Furthermore, it also helps users to avoid entering wrong entity data if a strict list of entities is set in the tools.



From the option screen you can load the list of entities, format is 3 columns with semicolon “;” as separator.

Example :

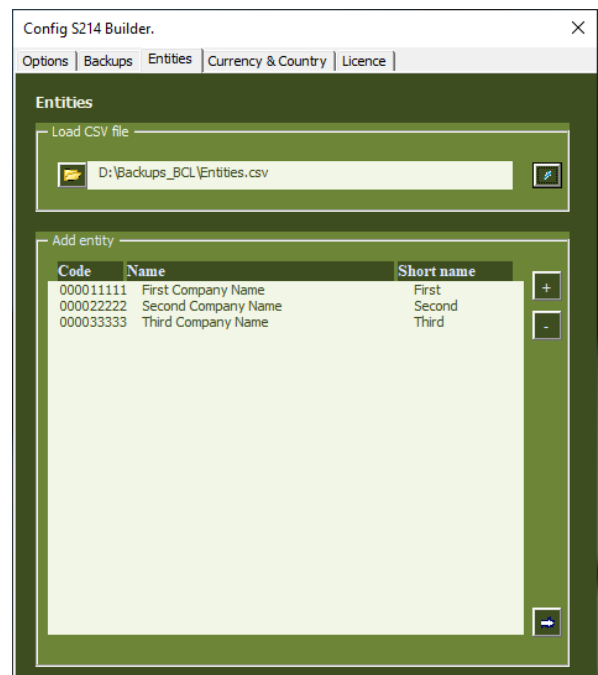
000011111; First Company Name; First
000022222; Second Company Name; Second
000033333; Third Company Name; Third

*The BCL code starting with DSE is also accepted.
Short Name is not mandatory but advised.*

An example of 3 entities listed.

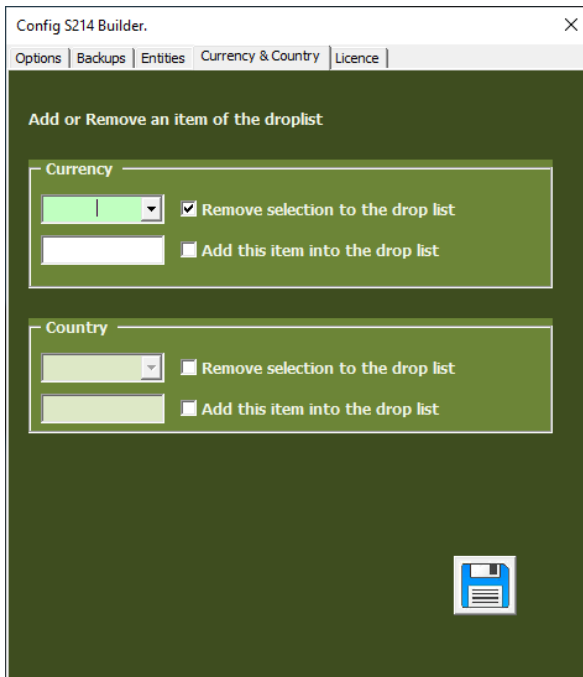
Button + or – allows to add or remove one entity.
Bottom “arrow” button allows exporting the list.

To test it, from the main screen of the tool, type or select an entity in the declarer’s field, the company’s name and short name will be updated.



As for the previous point about the backup, if you report for multiple entities and want to use this function, set the list of your entities using a simple excel with 3 columns, save it in “CSV” format, load it from this panel and save the macro as your master copy. Update the list from the same master copy if you add or remove entities during the year.

Currency & Country TAB



Config S214 Builder. X

Options | Backups | Entities | Currency & Country | Licence


Add or Remove an item of the droplist

Currency

Remove selection to the drop list
 Add this item into the drop list

Country

Remove selection to the drop list
 Add this item into the drop list




By default, the drop lists Country/Currency of the Assets/Liabilities tables contain all the available countries and currencies to transact with.

If the users want to limit this content to their transactional needs, this can be done by removing any item from the list.

To REMOVE, select in the currency in dropbox, check the confirmation box and click on SAVE.

To ADD, type in the new Currency or Country code, check the confirmation box and click on SAVE.

License TAB



Config S214 Builder. X

Options | Backups | Entities | Currency & Country | Licence

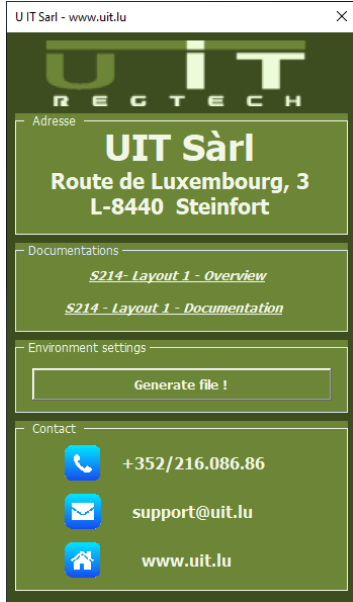
Company Name :	UIT Company
Contact Name :	Mr Thilmany Alexandre
Street & n° :	3, Route de Luxembourg
Zip code & City :	L-8440 Steinfort
Contact Phone n° :	+352 261 086 86
Contact Email :	support@uit.lu
Validity Date :	01/01/2024

Displays the license information.

U IT Button



This button will display the support information window.



From this screen, users can :

- Open the online documentation using the default browser.
- Verify and save the environment settings to help U IT support team in case of problem.
- Click on support@uit.lu to open a new email.
- Click on www.uit.lu to open U IT website.

Language Button



Switch between languages by choosing a flag (French / English).

Detailed header data

General information :

Grey fields values are fixed and automatically set by the tool. Any change will be discarded. A company can report either for itself or for other companies. The Company which conducts the report is called the Reporter and the company to report for is the Declarant. If a company reports for itself, it should have the same fields filled for both Type/Code of Reporter/Declarant respectively.

Date fields : the **End Of Month Date** and month's **Closing Date** shall be, by default, the last day of the reporting month. Choose from the **End Of Month Date** drop list. A change in the month's end date automatically causes the same change in the Closing Date.

Reporter - Type is the type of the company which does the reporting.

The following options are included in the **Type** drop list :

- 01 Number allocated by the CSSF to other entities
- 05 Special code assigned by the BCL
- 23 Banks
- 30 Management companies
- 32 PSF Company - Type P
- 34 Securitisation vehicles
- 39 Insurance
- 40 Number allocated by the CSSF to AIFM

Click on the value to display the list.

Reporter - Code is the BCL identifier for the company which is reporting, based on its RC number. It is coded in 9 digits (preceded by '0' [zero] if necessary).

Version	1.1
Creating Date	2023-04-20T11:20:26

End Month Date	2023-03-31
Closing Date	2023-03-31

Currency	EUR
Layout	1

Reporter	
Type	34
Code	000012345
Declarant	
Type	34
Code	000012345

Currency: defines in which currency the report is **calculated**.
E.g. : If the selected currency is in euro, all the reported amounts that will be captured, will be considered in the euro currency.

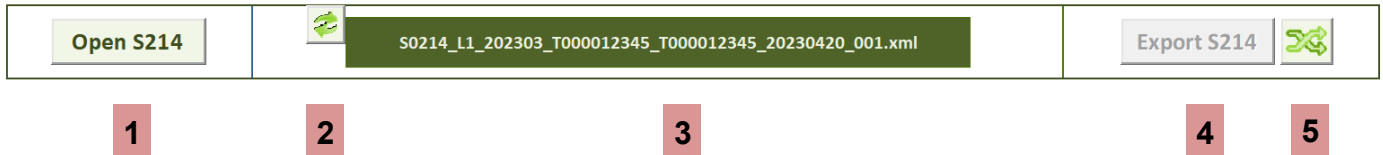
Declarant - Type is required to be "type 34".

Declarant - Code is the BCL identifier for the company which is declaring the information, based on its RC number. It is coded in 9 digits (preceded by '0' [zero] if necessary). It can be :

- Your company (same code Reporter).
- The company for which the report is generated.

Tool Section

Tools & functions overview



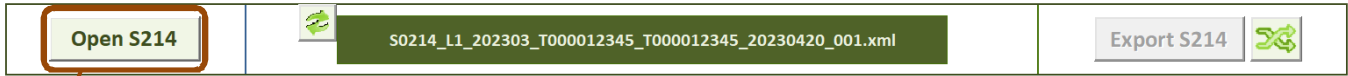
- 1 **Open S214** – Load / import a valid S214 XML report.
Open a file browser to select a former S214 report (xml file) to import.
- 2 **Refresh Filename** – refresh and validate the filename.
To check the future filename of the report (which is calculated automatically by the tool).
- 3 **Filename cell** – Display the exact filename of the report which will be generated.
- 4 **Export S214** – Generate the report based on captured data, in XML format.
By default, the button is greyed and isn't clickable unless the data are validated (using the Check button).
- 5 **Cross Check** – Open the Cross Check window.
Allow to compare some total amounts with the ones of a valid TPTTBS report of the same month and for the same entity.

The **Check** button located between both tables.

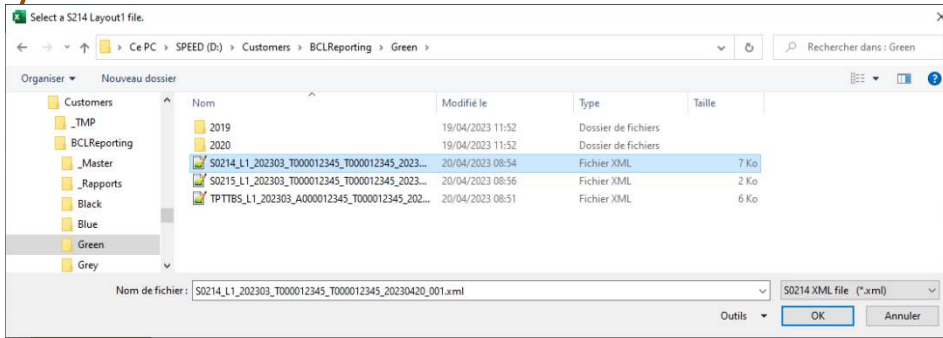


This button checks and validates the data prior exporting.

Open S214 button



Click the **“Open S214”** button to open a file browser to select a report to be imported.



Select the report to load and click **“OK”**.

The tool will ask for a confirmation.
Click **“Yes”** to proceed or **“No”** to cancel.



If data are already present in the table, the following confirmation message will be displayed.



In case of bad or invalid report loaded, the following message will pop up.



Refresh filename button



Updates and displays the report's filename in the main cell.
If there is an error with the filename, its color is turned to red.

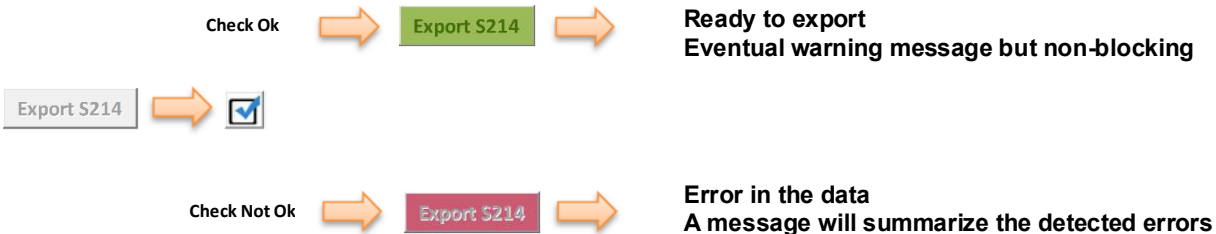
« Check » button



This button checks and verifies all the data captured based on report's circulars, rules and formats. All the data captured in both tables will be verified. In case of error, the user will be informed with a detailed message, the export button will remain greyed.

It's mandatory to use this function to prior to generate the report – see next point.

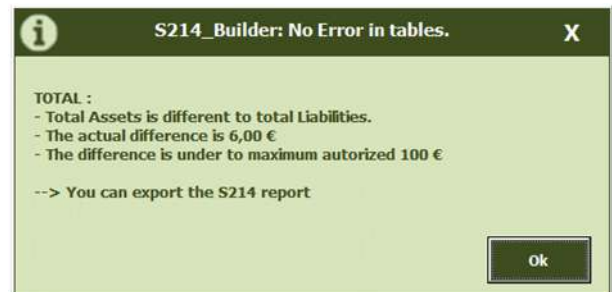
Summary view



Check Ok

If the check is successful, the Export button will turn Green.

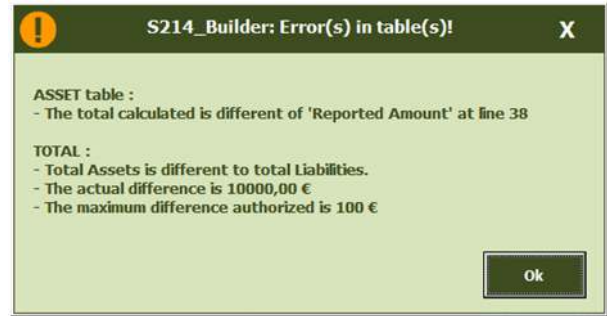
The tool may display an information message while allowing the export – an information message is non-blocking and don't prevent to generate the report.



Check Not Ok

In case of error, the check function will display a message box, the wrong cells in the table will be highlighted and the Export button will remain greyed.

Typical example of a Warning message box when the total amounts do not match between the Assets and Liabilities.



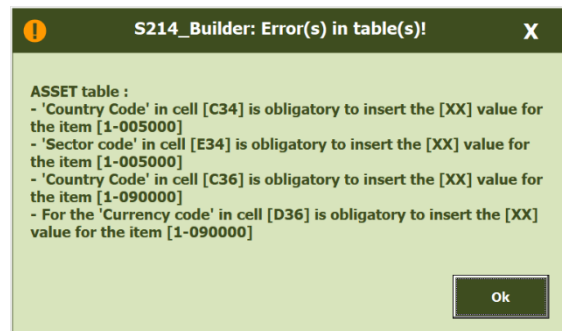
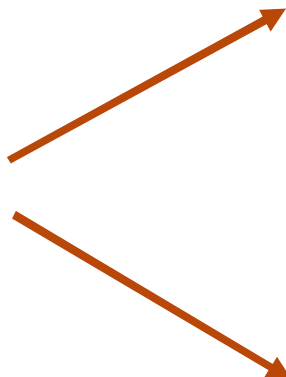
There are two possible errors that can occur in the Assets/Liabilities table :

- Pasting a wrong country code.
- Pasting a wrong Currency code.

For some specific items, there are restricted values that can be selected. They are limited to the [XX] and [XXX] values. This is the mandatory format for these cells. In order to not cause an error, they should be selected from the cell's list.

Example

In case of a wrong value, the tool displays a warning message and the cell's border which contains an error are highlighted with RED borders :



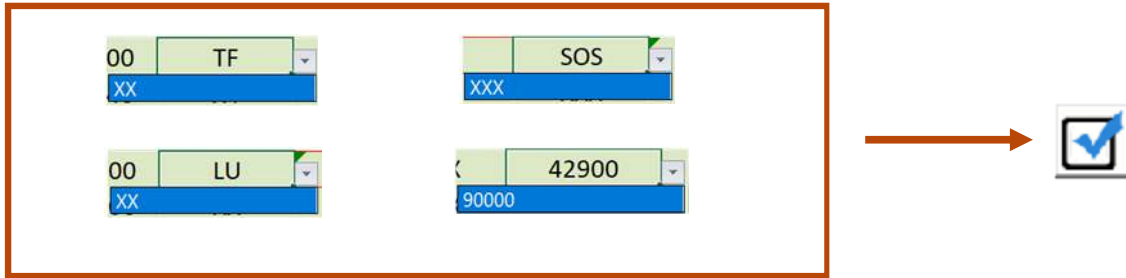
*Correct the highlighted cell's data and push again the **Check** button. Detail is given next page.*

ASSETS				TOTAL	Copy to 1-000000
4.719.136,25					
Item	Country	Currency	Sector	Init/Resi Maturity	Reported Amount
1-002000	AD	AED	11000	I000-01A	3.887.073,25
1-006000	AF	XXX	90000	I999-999	987,00
1-007000	AM	XXX	90000	I999-999	69,00
1-010010	AU	TOP	12100	I01A-02A	998,00
1-010020	RU	AUD	42900	I999-999	4.587,00
1-010030	XE	XFO	12300	I999-999	789.456,00
1-010040	AI	TOP	22120	I999-999	9.874,00
1-010050	TF	AUD	45000	I999-999	5.874,00
1-010060	VG	SOS	45000	I999-999	9.874,00
1-005000	TF	XXX	42900	I999-999	789,00
1-011040	WF	XXX	90000	I999-999	964,00
1-090000	LU	SOS	90000	I999-999	697,00
1-090000	XX	XXX	90000	I999-999	7.894,00
1-000000	XX	XXX	90000	I999-999	4.719.136,25

A Warning message box appears detailing the errors found.
One line per detected error is displayed.

In order to correct, the user must :

- For all the red bordered cells, click on them select values from the cell's drop lists.
Once the cells' value corrected, the cells' borders turn into a green color.
Test again data by clicking the Validation button.
- If there is no error, the **export S214** button will be enabled in order to export the S214 report.



The values are now correct, the Export button turned Green and the report can be generated.

Open S214	S0214_L1_202303_T000012345_T000012345_20230426_001.xml	Export S214
-----------	--	-------------

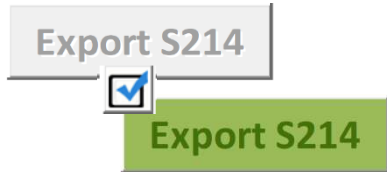
ASSETS						TOTAL
						Copy to 1-000000
						4.719.136,25
Item	Country	Currency	Sector	Init/Resi Maturity	Reported Amount	
1-002000	AD	AED	11000	I000-01A	3.887.073,25	
1-006000	AF	XXX	90000	I999-999	987,00	
1-007000	AM	XXX	90000	I999-999	69,00	
1-010010	AU	TOP	12100	I01A-02A	998,00	
1-010020	RU	AUD	42900	I999-999	4.587,00	
1-010030	XE	XFO	12300	I999-999	789.456,00	
1-010040	AI	TOP	22120	I999-999	9.874,00	
1-010050	TF	AUD	45000	I999-999	5.874,00	
1-010060	VG	SOS	45000	I999-999	9.874,00	
1-011020	AG	XXX	90000	I999-999	789,00	
1-011040	WF	XXX	90000	I999-999	964,00	
1-011090	AO	XXX	90000	I999-999	697,00	
1-090000	XX	XXX	90000	I999-999	7.894,00	
1-000000	XX	XXX	90000	I999-999	4.719.136,25	

LIABILITIES						TOTAL
						Copy to 2-000000
						4.719.136,25
Item	Country	Currency	Sector	Initial Maturity	Reported Amount	
2-002000	AF	ANG	22110	I000-01A	30.488,00	
2-002050	XX	XXX	90000	I999-999	987,00	
2-003000	XX	XXX	90000	I999-999	2.180.260,25	
2-005000	XX	XXX	90000	I999-999	1.700.000,00	
2-007000	XX	XXX	90000	I999-999	-98,00	
2-011000	AL	XXX	90000	I999-999	8.745,00	
2-090000	XX	XXX	90000	I999-999	798.754,00	
2-000000	XX	XXX	90000	I999-999	4.719.136,25	

The "TOTAL" amounts at the top of the 2 tables are the sum of the amounts calculated in each table. These amounts are compared to the totals reported in the items 1-000000 and 2-000000. The maximum difference between these "totals" accepted by the BCL is 100 €.

« Export S214 » button

Exports the captured data in XML format and generate the report.



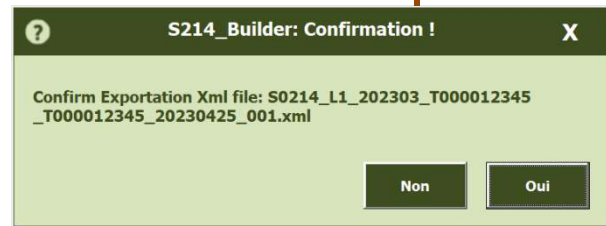
By default, this button is **disabled** and **greyed**. The tool will allow exporting a report after a successful validation (using the Check button). If the validation is fine, the Export button will turn to **green colour**. In case of any validation error, the Export button will turn **red**.

Clicking on the Export S214 button will generate the report.

ASSETS							TOTAL
Item	Country	Currency	Sector	Init/Resi Maturity	Reported Amount		4.719.136,25
1-002000	AD	AED	11000	I000-01A	3.887.073,25		
1-006000	AF	XXX	90000	1999-999	987,00		
1-007000	AM	XXX	90000	1999-999	69,00		
1-010010	AU	TOP	12100	I01A-02A	998,00		
1-010020	RU	AUD	42900	1999-999	4.587,00		
1-010030	XE	XFO	12300	1999-999	789.456,00		
1-010040	AI	TOP	22120	1999-999	9.874,00		
1-010050	TF	AUD	45000	1999-999	5.874,00		
1-010060	VG	SOS	45000	1999-999	9.874,00		

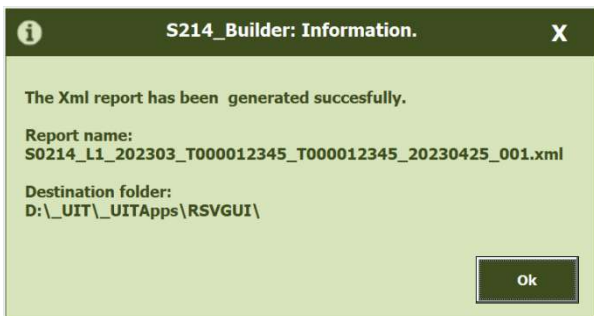
LIABILITIES							TOTAL
Item	Country	Currency	Sector	Initial Maturity	Reported Amount		4.719.136,25
2-002000	AF	ANG	22110	I000-01A	30.488,00		
2-002050	XX	XXX	90000	1999-999	987,00		
2-003000	XX	XXX	90000	1999-999	2.180.260,25		
2-005000	XX	XXX	90000	1999-999	1.700.000,00		
2-007000	XX	XXX	90000	1999-999	-98,00		
2-011000	AL	XXX	90000	1999-999	8.745,00		
2-090000	XX	XXX	90000	1999-999	798.754,00		
2-000000	XX	XXX	90000	1999-999	4.719.136,25		

The tool will ask for a confirmation. Click "Yes" to proceed or "No" to cancel.

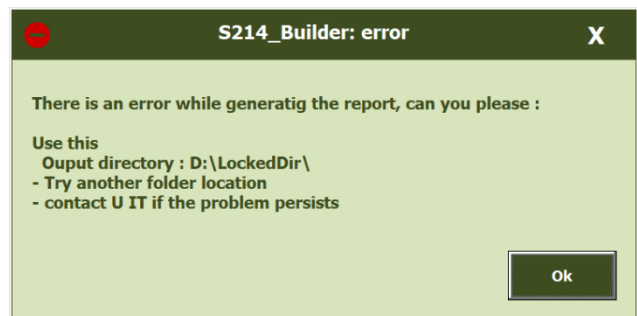


The tool displays the results of the export (creation) of the report. Two possible results :

Successful export



Error at export



If an error occurs during the export, it's generally caused by lack of rights in the directory where the reports are saved. To check first with the IT.

« Cross-Check » with monthly TPT report

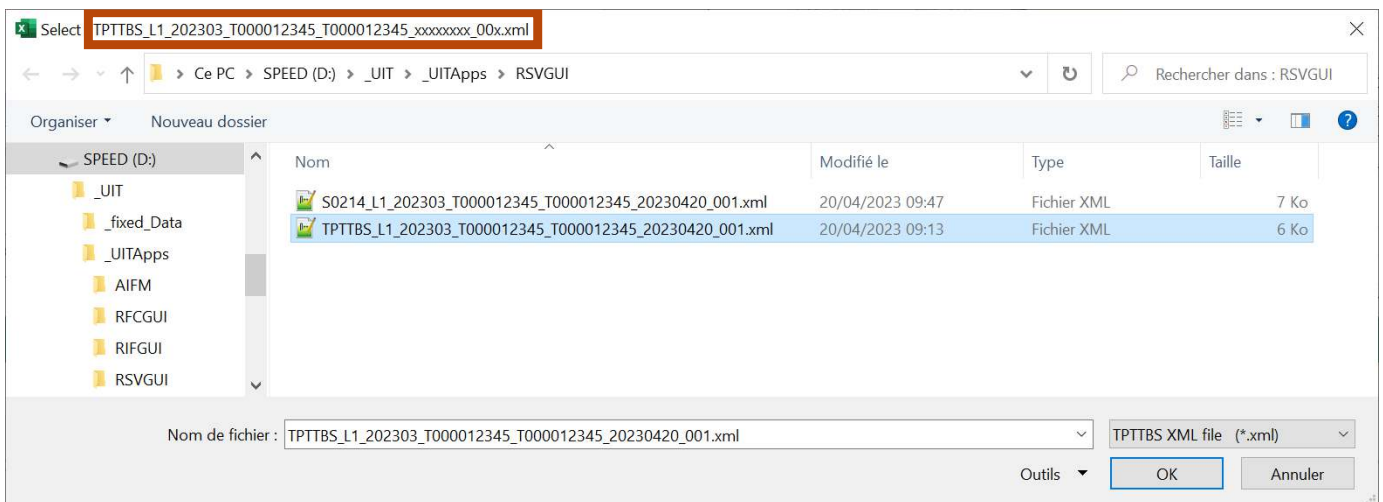


The Cross-Check function provides the ability to compare the amounts for the items 1-003000 / 1-005000 / 2-002050 / 2-003000 and 2-005000 between the S214 report and the TPTTBS report. This verification is made by the BCL between the reports of the same reporting period.

Example : between the S214 report of the first quarter of a year and the TPTTBS reports of **March** of the **same year**.



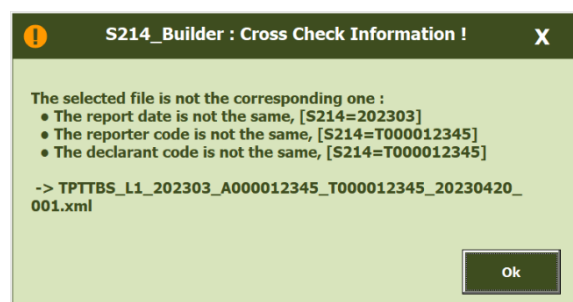
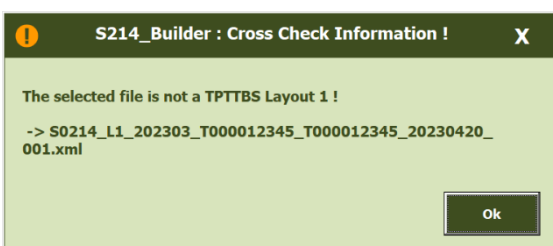
When clicked, a file explorer window opens to select and load a TPTTBS report.



The start of the filename of the right TPTTBS reports is already calculated by the tool (see the top and the bottom of the window). This helps to identify the correct TPTTBS report to load to compare to the current S214 report. When selected and opened the 2 following results can happen :

TPTTBS does not match



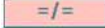
Either the TPTTBS was not generated by the tool TPTTBS Builder or the date of the report, the code of the Reporter or the codes of the Declarer are different.



TPTIBS matches

When the right report is loaded, the Cross-Check function will display a comparison table of the amounts.

Columns :

<u>Item</u>	Reference of the checked Item.
<u>S214</u>	Total calculated amounts of Item in the S214 report.
<u>TPTTBS</u>	Total calculated amounts of Item in the TPTTBS report.
<u>CrossCheck</u>	Status of the verification.
	Data in each report matches.
	One of the reports does not have the item, the "Missing" message is highlighted in the column of the item.
	Data does not match.

Successful Cross-Check

Results Cross Check - TPTTBS & S214			
Item	S214 - [2023/03]	TPTTBS - [2023/03]	CrossCheck
1-003000	n/a	n/a	OK
1-005000	n/a	n/a	OK
2-002050	1 000,00	1 000,00	OK
2-003000	2 180 260,25	2 180 260,25	OK
2-005000	1 700 000,00	1 700 000,00	OK

Reporter code : T000012345
Declarant code : T000012345

[Close](#)

Cross-Check with errors

Results Cross Check - TPTTBS & S214			
Item	S214 - [2023/03]	TPTTBS - [2023/03]	CrossCheck
1-003000	5 000,00	Missing/Manquant	?/?
1-005000	n/a	n/a	OK
2-002050	987,00	1 000,00	=/=
2-003000	2 180 260,25	2 180 260,25	OK
2-005000	1 700 000,00	1 700 000,00	OK

Reporter code : T000012345
Declarant code : T000012345

[Close](#)

*Item "1-003000" is missing in the TPTTBS report (or in excess in S214 report).
Item "2-002050", there is a difference in the total of the amounts for both reports.*

Data Section

Tables - global view

Information and rules of section Data

- Place the cursor over the cells to display information and references.
- Select first an item, depending on its nature the list of accepted values for country, currency, sector and maturity will be adapted.
- Every captured reported amount should be in the currency defined at the header.

Warning : for instance, if the report's main currency is USD, any line inserted for which the currency is not USD must have its amount converted into USD – in other words, any amount captured in the report will be USD or converted to USD if the Currency line is different.

- The headings **Total** (in Assets and Liabilities tables) are mandatory and must be equal. They correspond to the sum of the calculated reported amounts of every captured item in the assets or liabilities table – they are automatically calculated by the tool.
- Only the items : **1-003000**, **1-005000**, **2-005000** are the ones which allows a negative value.
- **Total** value is automatically calculated by the macro.

ASSETS				TOTAL		Copy to 1-000000
Item	Country	Currency	Sector	Init/Resi Maturity	Reported Amount	

LIABILITIES				TOTAL		Copy to 2-000000
Item	Country	Currency	Sector	Initial Maturity	Reported Amount	

Item	The asset's code. <i>Ex : 1-002000 = Currency and deposits</i>
Country	The issuing country code. Two-characters code according to ISO-3166. <i>Ex : LU = Luxembourg</i>
Currency	The currency of the reported amount. <i>Ex : EUR = Eur</i>
Sector	A five-character code from BCL for the financial sector. <i>Ex : 10000 = monetary - financial institutions</i>
Initial maturity	A seven characters code. <i>Ex : 1000-01A</i>
Reported amount	The value corresponding to the amount of the item. The amount must be converted into the currency of the report. (Currency value in Header).

Encoding

- Choose an item from those proposed in the list.
- Depending on the chosen item, the choices are limited to a specific list of values (for : country, currency, sector and maturity).

Insert new lines

To add a new line simply go to the “Reported amount” column and press TAB.

Item Occurrences

Item

- 1-002000 - Deposits and loan claims
- 1-003000 - Debt securities held
- 1-005000 - Equity and investment fund shares/units held
- 1-006000 - Non-financial assets
- 1-007000 - Financial derivatives
- 1-010010 - Securitised loans – originator MFI resident in euro area
- 1-010020 - Securitised loans – originator GG resident in euro area
- 1-010030 - Securitised loans – originator OFI / NMIF / ICPF resident in euro area
- 1-010040 - Securitised loans – originator NFC resident in euro area
- 1-010050 - Securitised loans – non-euro area originator
- 1-010060 - Securitised loans traded on the secondary market – non-locatable originator
- 1-011020 - Other securitised assets – originator GG resident in euro area
- 1-011040 - Other securitised assets – originator NFC resident in euro area
- 1-011090 - Other securitised assets – other originator
- 1-090000 - Other assets
- 1-000000 - Total assets

Item

- 2-002000 - Loans and deposits received
- 2-002050 - Short sales of securities
- 2-003000 - Debt securities issued
- 2-005000 - Capital (equity, shares and units issued)
- 2-007000 - Reserves, provisions and results
- 2-011000 - Financial derivatives
- 2-090000 - Other liabilities
- 2-000000 - Total liabilities

- **Total Assets** and **Total Liabilities** are the only two mandatory fields. Their values must be an identical amount under "1-00000" and "2-00000".

Delete one or more lines



Use the DELETE / DUSTBIN buttons to delete one or more rows of a table.

Select

→

ASSETS				TOTAL Copy to 1-00000	
Item	Country	Currency	Sector	Init/Resi Maturity	Reported Amount
1-002000	AD	AED	11000	I000-01A	3.887.073,25
1-006000	AF	XXX	90000	I999-999	987,00
1-007000	AM	XXX	90000	I999-999	69,00
1-010010	AU	TOP	12100	I01A-02A	998,00
1-010020	RU	AUD	42900	I999-999	4.587,00
					4.719.136,25

Click

→

ASSETS				TOTAL Copy to 1-00000	
Item	Country	Currency	Sector	Init/Resi Maturity	Reported Amount
1-002000	AD	AED	11000	I000-01A	3.887.073,25
1-006000	AF	XXX	90000	I999-999	987,00
1-007000	AM	XXX	90000	I999-999	69,00
1-010010	AU	TOP	12100	I01A-02A	998,00
1-010020	RU	AUD	42900	I999-999	4.587,00
					4.718.149,25

S214_Builder: Please confirm.

Are you sure you want to delete your selection: [B26:G26] from ASSETS table ?

Non
Oui

The entire line will be selected and the tool will ask for a confirmation to delete the line.

ASSETS				TOTAL Copy to 1-00000	
Item	Country	Currency	Sector	Init/Resi Maturity	Reported Amount
1-002000	AD	AED	11000	I000-01A	3.887.073,25
1-007000	AM	XXX	90000	I999-999	69,00
1-010010	AU	TOP	12100	I01A-02A	998,00
1-010020	RU	AUD	42900	I999-999	4.587,00
					4.718.149,25

Examples of selection + DELETE button



ASSETS					TOTAL
					4.719
Item	Country	Currency	Sector	Init/Resi Maturity	
1-002000	AD	AED	11000	I000-01A	
1-006000	AF	XXX	90000	I999-999	
1-007000	AM	XXX	90000	I999-999	
1-010010	AU	TOP	12100	I01A-02A	
1-010020	RU	AUD	42900	I999-999	



ASSETS					TOTAL
					4.719
Item	Country	Currency	Sector	Init/Resi Maturity	
1-002000	AD	AED	11000	I000-01A	
1-006000	AF	XXX	90000	I999-999	
1-007000	AM	XXX	90000	I999-999	
1-010010	AU	TOP	12100	I01A-02A	
1-010020	RU	AUD	42900	I999-999	



LIABILITIES					TOTAL
					4.719
Item	Country	Currency	Sector	Initial Maturity	
2-002000	AF	ANG	22110	I000-01A	
2-002050	XX	XXX	90000	I999-999	
2-003000	XX	XXX	90000	I999-999	
2-005000	XX	XXX	90000	I999-999	




LIABILITIES					TOTAL
					4.719
Item	Country	Currency	Sector	Initial Maturity	
2-002000	AF	ANG	22110	I000-01A	
2-002050	XX	XXX	90000	I999-999	
2-003000	XX	XXX	90000	I999-999	
2-005000	XX	XXX	90000	I999-999	



ASSETS					TOTAL
					4.719
Item	Country	Currency	Sector	Init/Resi Maturity	
1-002000	AD	AED	11000	I000-01A	
1-006000	AF	XXX	90000	I999-999	
1-007000	AM	XXX	90000	I999-999	
1-010010	AU	TOP	12100	I01A-02A	
1-010020	RU	AUD	42900	I999-999	



ASSETS					TOTAL
					4.719
Item	Country	Currency	Sector	Init/Resi Maturity	
1-002000	AD	AED	11000	I000-01A	
1-006000	AF	XXX	90000	I999-999	
1-007000	AM	XXX	90000	I999-999	
1-010010	AU	TOP	12100	I01A-02A	
1-010020	RU	AUD	42900	I999-999	

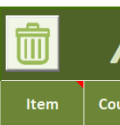


ASSETS					TOTAL	Copy to 1-000000
					4.719.136,25	
Item	Country	Currency	Sector	Init/Resi Maturity	Reported Amount	
1-002000	AD	AED	11000	I000-01A	3.887.073,25	
1-006000	AF	XXX	90000	I999-999	987,00	
1-007000	AM	XXX	90000	I999-999	69,00	
1-010010	AU	TOP	12100	I01A-02A	998,00	
1-010020	RU	AUD	42900	I999-999	4.587,00	




LIABILITIES					TOTAL	Copy to 2-000000
					4.719.136,25	
Item	Country	Currency	Sector	Initial Maturity	Reported Amount	
2-002000	AF	ANG	22110	I000-01A	30.488,00	
2-002050	XX	XXX	90000	I999-999	987,00	
2-003000	XX	XXX	90000	I999-999	2.180.260,25	
2-005000	XX	XXX	90000	I999-999	1.700.000,00	
2-007000	XX	XXX	90000	I999-999	-98,00	

If you click on the left dustbin button, left cells are selected and vice versa.




ASSETS					TOTAL	Copy to 1-000000
					4.719.136,25	
Item	Country	Currency	Sector	Init/Resi Maturity	Reported Amount	
1-002000	AD	AED	11000	I000-01A	3.887.073,25	
1-006000	AF	XXX	90000	I999-999	987,00	
1-007000	AM	XXX	90000	I999-999	69,00	
1-010010	AU	TOP	12100	I01A-02A	998,00	
1-010020	RU	AUD	42900	I999-999	4.587,00	



LIABILITIES					TOTAL	Copy to 2-000000
					4.719.136,25	
Item	Country	Currency	Sector	Initial Maturity	Reported Amount	
2-002000	AF	ANG	22110	I000-01A	30.488,00	
2-002050	XX	XXX	90000	I999-999	987,00	
2-003000	XX	XXX	90000	I999-999	2.180.260,25	
2-005000	XX	XXX	90000	I999-999	1.700.000,00	
2-007000	XX	XXX	90000	I999-999	-98,00	

Double clicking the DELETE button

If the delete button is double clicked, all the lines of the table are selected and can be deleted if further confirmed :

2 x 

ASSETS					TOTAL
					4.719
Item	Country	Currency	Sector	Init/Resi Maturity	
1-002000	AD	AED	11000	I000-01A	
1-006000	AF	XXX	90000	I999-999	
1-007000	AM	XXX	90000	I999-999	
1-010010	AU	TOP	12100	I01A-02A	
1-010020	RU	AUD	42900	I999-999	

↓

S214_Builder: Please confirm. X

Are you sure you want to delete your selection: [B25:G38] from ASSETS table ?

↓

ASSETS					TOTAL	Copy to 1-000000
					4.719.136,25	
Item	Country	Currency	Sector	Init/Resi Maturity	Reported Amount	
1-002000	AD	AED	11000	I000-01A	3.887.073,25	
1-006000	AF	XXX	90000	I999-999	987,00	
1-007000	AM	XXX	90000	I999-999	69,00	
1-010010	AU	TOP	12100	I01A-02A	998,00	
1-010020	RU	AUD	42900	I999-999	4.587,00	
1-010030	XE	XFO	12300	I999-999	789.456,00	
1-010040	AI	TOP	22120	I999-999	9.874,00	
1-010050	TF	AUD	45000	I999-999	5.874,00	
1-010060	VG	SOS	45000	I999-999	9.874,00	
1-011020	AG	XXX	90000	I999-999	789,00	
1-011040	WF	XXX	90000	I999-999	964,00	
1-011090	AO	XXX	90000	I999-999	697,00	
1-090000	XX	XXX	90000	I999-999	7.894,00	
1-000000	XX	XXX	90000	I999-999	4.719.136,25	

↓

ASSETS					TOTAL	Copy to 1-000000
Item	Country	Currency	Sector	Init/Resi Maturity	Reported Amount	

Copy data from another source

One table can be copy/paste from whether another excel sheet or a TAB-separated text file :

	A	B	C	D	E	F
1	1-003000	XX	XXX	90000	1999-999	1.000,00
2	1-000000	XX	XXX	90000	1999-999	3.000,00
3	1-005000	XX	XXX	90000	1999-999	1.000,00
4	1-006000	GB	XXX	90000	1999-999	500,00
5	1-007000	LU	XXX	90000	1999-999	500,00

*Sans titre - Bloc-notes						
Fichier	Edition	Format	Affichage	Aide		
1-003000	XX	XXX	90000	1999-999	1.000,00	
1-000000	XX	XXX	90000	1999-999	3.000,00	
1-005000	XX	XXX	90000	1999-999	1.000,00	
1-006000	GB	XXX	90000	1999-999	500,00	
1-007000	LU	XXX	90000	1999-999	500,00	

Bloc note / Notepad :
Separators **must** be tabs.

Select + **CTRL** + **C**

Select the top-left cell of one of the 2 tables.

ASSETS		TOTAL	Copy to 1-000000
Item	Country		

LIABILITIES		TOTAL	Copy to 2-000000
Item	Country	Currency	Sector
Initial Maturity	Reported Amount		

CTRL + **V**

- Cut
- Copy
- Paste Options:
 - 123
 - fx
 - 123
- Paste Special...
 - Paste
 - 123
 - 123
 - 123
 - Paste Values
 - 123
 - 123
 - 123
 - Other Paste Options
 - Paste Special...
- Refresh
- Insert
- Delete
- Select
- Clear Contents
- Quick Analysis
- Sort
- Filter
- Table
- XML
- Insert Comment
- Format Cells...
- Pick From Drop-down List...
- Hyperlink...

Paste Special

Paste

- All
- Formulas
- Values
- Formats
- Comments
- Validation
- All using Source theme
- All except borders
- Column widths
- Formulas and number formats
- Values and number formats
- All merging conditional formats

Operation

- None
- Add
- Subtract
- Multiply
- Divide

Skip blanks Transpose

Paste Link OK Cancel

Excel : Right mouse button for paste values.

ASSETS		TOTAL	Copy to 1-000000
Item	Country	Currency	Sector
Initial Maturity	Reported Amount		
			3.000,00
1-003000	XX	XXX	90000
1-000000	XX	XXX	90000
1-005000	XX	XXX	90000
1-006000	GB	XXX	90000
1-007000	LU	XXX	90000

The "TOTAL" field

Displays the **TOTAL amount** calculated for all the lines of the table and is compared to the total items (1-000000 & 2-000000).

LIABILITIES						TOTAL	Copy to 2-000000
						3.000,00	
Item	Country	Currency	Sector	Initial Maturity	Reported Amount		
2-002050	XX	XXX	90000	1999-999	1.000,00		
2-000000	XX	XXX	90000	1999-999	3.000,00		
2-003000	XX	XXX	90000	1999-999	500,00		
2-007000	XX	XXX	90000	1999-999	1.500,00		

Total calculation.

ASSETS						TOTAL	Copy to 1-000000
						3.000,00	
Item	Country	Currency	Sector	Init/Resi Maturity	Reported Amount		
1-003000	XX	XXX	90000	1999-999	1.000,00		
1-000000	XX	XXX	90000	1999-999	3.000,00		
1-005000	XX	XXX	90000	1999-999	1.000,00		
1-006000	GB	XXX	90000	1999-999	500,00		
1-007000	LU	XXX	90000	1999-999	500,00		

Total items 1-000 / 2-000.

A difference up to 100€ between Assets and Liabilities TOTALs is accepted.

- 1-000000 and 2-000000 totals should have the same value. However, it is allowed a maximum difference of 100€ between them.
- A detailed message will be displayed at the "Check" in case of problem.
- If the calculated TOTAL amount is different from the amount set in the Total Item, the tool will :
 - ◆ Indicate the problem in the message window.
 - ◆ Highlight the reported amount of the Total item line.
 - ◆ Propose to use the "Copy to 1-000000" or "Copy to 2-000000" button.

Case scenarios

Case 1 : All "Total" numbers correspond

ASSETS						TOTAL	Copy to 1-000000
						3.000,00	
Item	Country	Currency	Sector	Init/Resi Maturity	Reported Amount		
1-003000	XX	XXX	90000	1999-999	1.000,00		
1-000000	XX	XXX	90000	1999-999	3.000,00		
1-005000	XX	XXX	90000	1999-999	1.000,00		
1-006000	GB	XXX	90000	1999-999	500,00		
1-007000	LU	XXX	90000	1999-999	500,00		

LIABILITIES						TOTAL	Copy to 2-000000
						3.000,00	
Item	Country	Currency	Sector	Initial Maturity	Reported Amount		
2-002050	XX	XXX	90000	1999-999	1.000,00		
2-000000	XX	XXX	90000	1999-999	3.000,00		
2-003000	XX	XXX	90000	1999-999	500,00		
2-007000	XX	XXX	90000	1999-999	1.500,00		

- Pressing the "Check" button will modify the Export S214 Button from greyed to green, allowing to generate the report.

Case 2 : Calculated TOTAL is different from total set in “Total Item(s)”

In this example we added 2 problems, one by table :

- In the Assets table, the amount of the Total Item (1-000000) is 3200, when the total of all the other items is 3000 as displayed in the automatically TOTAL field calculated.
- Same kind of difference in the Liabilities with the Item 2-000000 (2900 <> 3000).

ASSETS					TOTAL	Copy to 1-000000
					3.000,00	
Item	Country	Currency	Sector	Init/Resi Maturity	Reported Amount	
1-003000	XX	XXX	90000	1999-999	1.000,00	
1-000000	XX	XXX	90000	1999-999	3.200,00	
1-005000	XX	XXX	90000	1999-999	1.000,00	
1-006000	GB	XXX	90000	1999-999	500,00	
1-007000	LU	XXX	90000	1999-999	500,00	

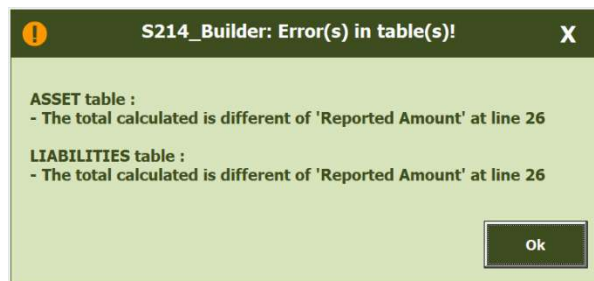
LIABILITIES					TOTAL	Copy to 2-000000
					3.000,00	
Item	Country	Currency	Sector	Initial Maturity	Reported Amount	
2-002050	XX	XXX	90000	1999-999	1.000,00	
2-000000	XX	XXX	90000	1999-999	2.900,00	
2-003000	XX	XXX	90000	1999-999	500,00	
2-005000	XX	XXX	90000	1999-999	1.500,00	

Pressing the “Check” button will :

- ◆ Displays a message window detailing the error(s) found.
- ◆ Highlight the Reported Amount(s) of the Total Item for both table (red cell's border).
- ◆ Display one “Copy to XXX” button by table allowing to correct the problem (*).

ASSETS					TOTAL	Copy to 1-000000
					3.000,00	
Item	Country	Currency	Sector	Init/Resi Maturity	Reported Amount	
1-003000	XX	XXX	90000	1999-999	1.000,00	
1-000000	XX	XXX	90000	1999-999	3.200,00	
1-005000	XX	XXX	90000	1999-999	1.000,00	
1-006000	GB	XXX	90000	1999-999	500,00	
1-007000	LU	XXX	90000	1999-999	500,00	

LIABILITIES					TOTAL	Copy to 2-000000
					3.000,00	
Item	Country	Currency	Sector	Initial Maturity	Reported Amount	
2-002050	XX	XXX	90000	1999-999	1.000,00	
2-000000	XX	XXX	90000	1999-999	2.900,00	
2-003000	XX	XXX	90000	1999-999	500,00	
2-005000	XX	XXX	90000	1999-999	1.500,00	



Correcting the Assets table :

- ◆ Whether the Reported Amount is not correct and has to be changed from 3200 to 3000. If yes, click the “**Copy to 1-000000**” button to correct.
- ◆ Or one or more of the Reported Amount(s) of other Items must be corrected in order that their total match the Total Item (1-000000) value.

Correcting the Liabilities table :

- ◆ Whether the Reported Amount is not correct and has to be changed from 2900 to 3000. If yes, click the “**Copy to 2-000000**” button to correct.
- ◆ Or one or more of the Reported Amount(s) of other Items must be corrected in order that their total matches the Total Item (2-000000) value.

Case 3 : Totals are different between Assets and Liabilities

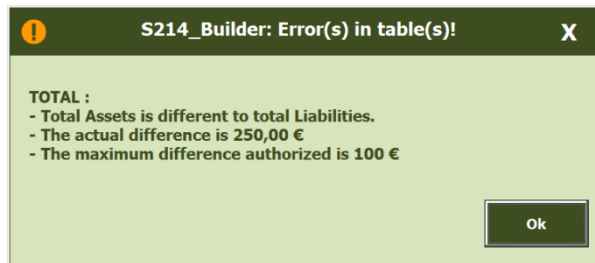
- In this example we have a different TOTAL between both tables : 3000 <> 3250.
- A difference of 100 is accepted but here the difference is 250.

Pressing the “Check” button will :

- ◆ Displays a message window detailing the error(s) found.
- ◆ Highlight the automated calculated TOTAL cells with a light orange color.

ASSETS						TOTAL
						Copy to 1-000000
						3.000,00
Item	Country	Currency	Sector	Init/Resi Maturity	Reported Amount	
1-003000	XX	XXX	90000	1999-999	1.000,00	
1-000000	XX	XXX	90000	1999-999	3.000,00	
1-005000	XX	XXX	90000	1999-999	1.000,00	
1-006000	GB	XXX	90000	1999-999	500,00	
1-007000	LU	XXX	90000	1999-999	500,00	

LIABILITIES						TOTAL
						Copy to 2-000000
						3.250,00
Item	Country	Currency	Sector	Initial Maturity	Reported Amount	
2-002050	XX	XXX	90000	1999-999	1.000,00	
2-000000	XX	XXX	90000	1999-999	3.250,00	
2-003000	XX	XXX	90000	1999-999	750,00	
2-005000	XX	XXX	90000	1999-999	1.500,00	



Cause of such error in totals may be multiple, review all numbers to find the guilty Item(s).

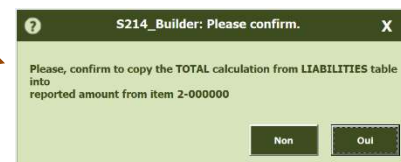
Contextual copy buttons

These buttons appears only **after a Check and** when the Reported Amount set in the Total item (1-000000 or 2-000000) is different from the calculated amount of all the other Items of the same table.

Clicking on these buttons will copy the TOTAL calculated amount in the Reported Amount of the Total Item (1-000000 or 2-000000) cell of the corresponding table.

Normally, when the Total Item of one the tables is updated, it should be the total of all the other item’s added amounts. The tool verifies this and allows to quickly update the total amount (Total Item) of its table.

LIABILITIES						TOTAL
						Copy to 2-000000
						3.000,00
Item	Country	Currency	Sector	Initial Maturity	Reported Amount	
2-002050	XX	XXX	90000	1999-999	1.000,00	
2-000000	XX	XXX	90000	1999-999	3.020,00	
2-003000	XX	XXX	90000	1999-999	500,00	
2-005000	XX	XXX	90000	1999-999	1.500,00	



Confirm the update.

When clicked, the TOTAL value is updated in the corresponding X-00000 Item.

LIABILITIES						TOTAL
						Copy to 2-000000
						3.000,00
Item	Country	Currency	Sector	Initial Maturity	Reported Amount	
2-002050	XX	XXX	90000	1999-999	1.000,00	
2-000000	XX	XXX	90000	1999-999	3.000,00	
2-003000	XX	XXX	90000	1999-999	500,00	
2-005000	XX	XXX	90000	1999-999	1.500,00	

Excel & Windows options & Settings

Excel is packed with features and options which allow any IT administrator to customize its installation & configuration within the company. There are a couple of protections that can be set at the level of Excel but these settings can be furthermore controlled and imposed by extra security layers set by the IT administrators at the level of the company’s network (Windows domain).

Allowing or not the macros of the tool may also depend where the tool is located (where is stored the excel file on your PC or network). Excel can recognize some trusted areas (in practice directories) where it will open a macro without problem or just a warning, and it may, for instance, prevent the macros to enable if it's located outside a trusted area/directory/location.

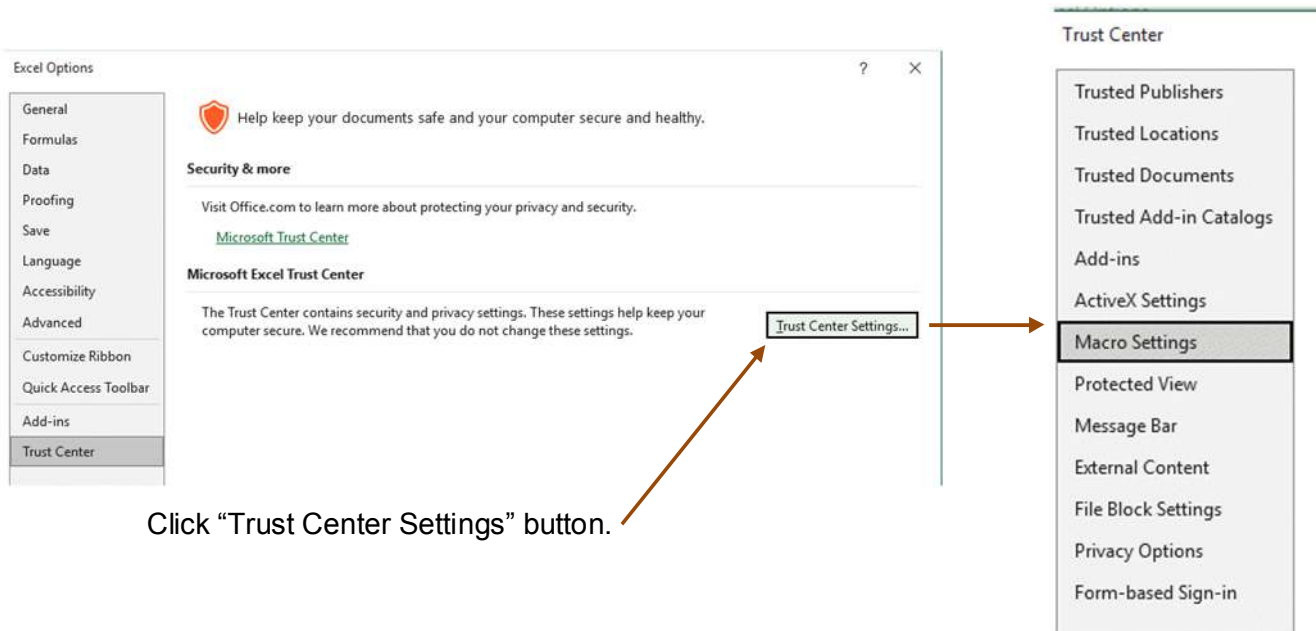
This means that it can be complex for simply impossible to solve a security problem if the tool refuses to open, enable the macros, be trusted, execute some code/functions or simply save the XML reports.

When using the tool for the first time, if you encounter a problem using it, first verify if the problem is not documented in the next pages, try to solve it if you are authorized to change your Excel settings. If unsuccessful, contact your IT. You can reference U IT and propose them to contact us if they are not able to solve the problem.

The following screenshots may change depending on your version of Excel – the next screens were taken from Excel 2019.

Access the Trust Center of Excel

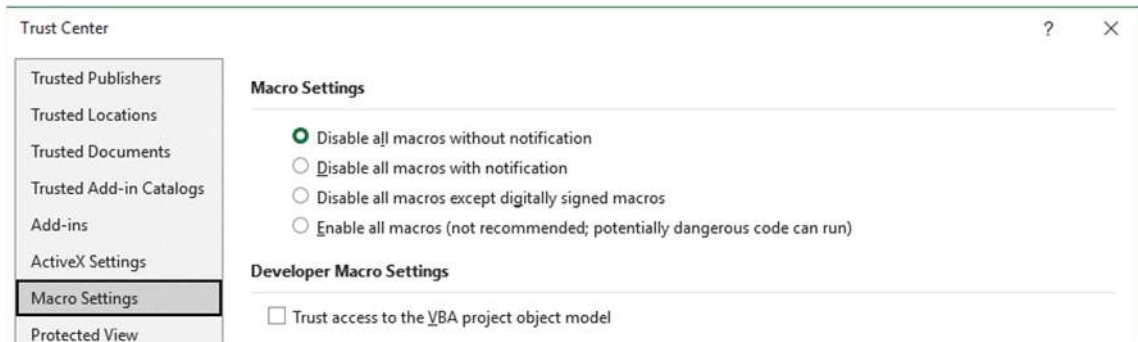
Go in the Excel menu → Excel Options



- Accessing the Trust Center or some of its panel may be greyed for a normal user account. It may even not be possible to access the Trust Center. In this situation, please contact your IT.

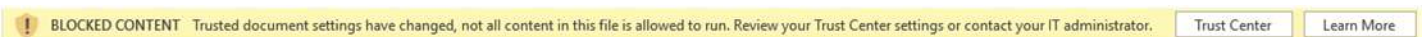
Trust Center → Macros Settings

The macros can be whether fully disabled or enabled under 3 different scenarios. The following screen show the Excel Trust Center panel which allows to set the options :



Disable all macros without notification

As per to the screen above, when the macros or disabled excel will (should) display the following message below the ribbon :



The problem can be solved by going in the Trust Center and chose one of the 3 other options. You may not be allowed to perform this change and have to ask the help of the IT.

Disable all macros with notification

This is the most common option set. Excel will display the following message below the ribbon. Click “Enable Content” to proceed.



Depending on your Windows/domain settings, Excel will prompt this message each time you open the macros or only one time (one time per macros). If Excel displays this message each time the same macros is opened, it's possible to prevent this behavior but may require the intervention of the IT (see also [Trust Center → Trusted Documents](#) on next page).

Disable all macros except digitally signed macros

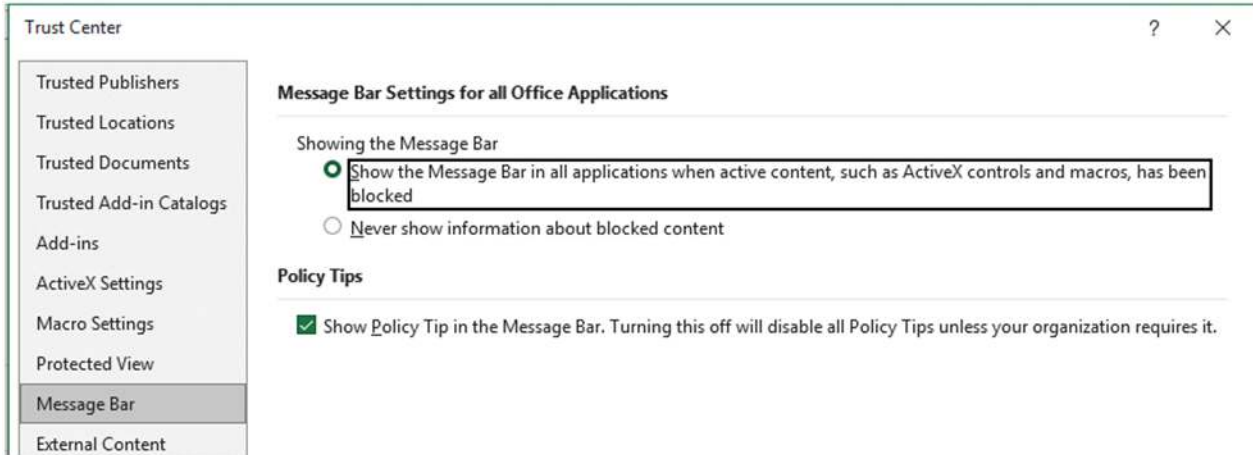
Rarely used, will only authorized macro with a digital signature.

Enable all macros

As specified by Excel, this option is not recommended as it's a common setting for all excel file that can be opened.

Trust Center → Message bar

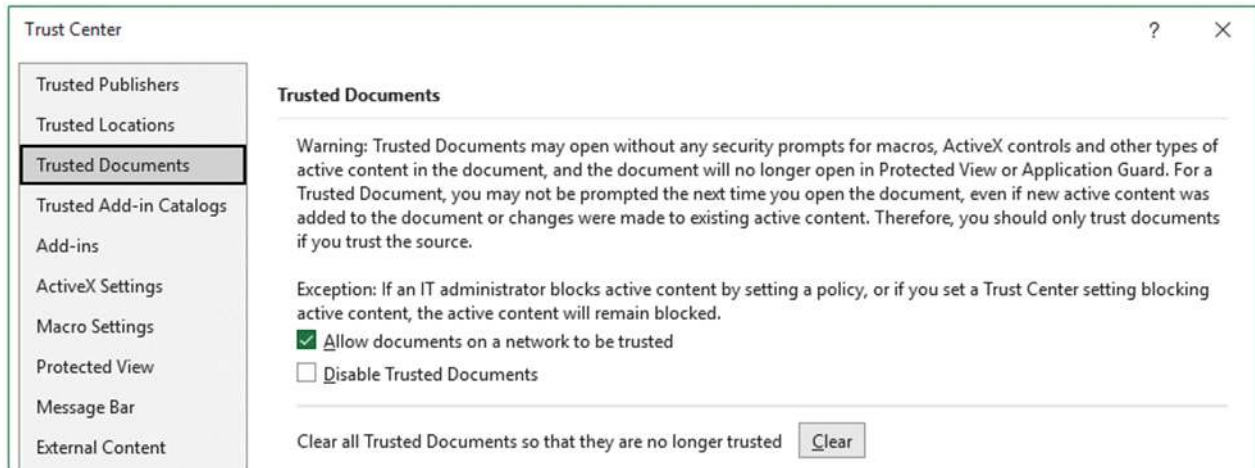
Linked to the macro's settings, another option in the Trust Center of excel may cause problem : the Message bar. By default, this option is enabled. But if disabled, the macros will open without any warning message from Excel but the tool will not work (for instance buttons can't be pressed).



Ensure that this option is well set as per to the screen above.

Trust Center → Trusted Documents

Another option in the Trust Center may be used and activated : allowing users to specify when a document can be trusted, removing the need to enable the macro at each opening.



When enabled, each time a new macro is opened, Excel will display the following message, if click “Yes” Excel will not ask again the next time the same file is opened.



- Extra security settings may overwrite this option.
- If the macro is copied then opened, this will trigger the same question (once per file or copy of the tool).

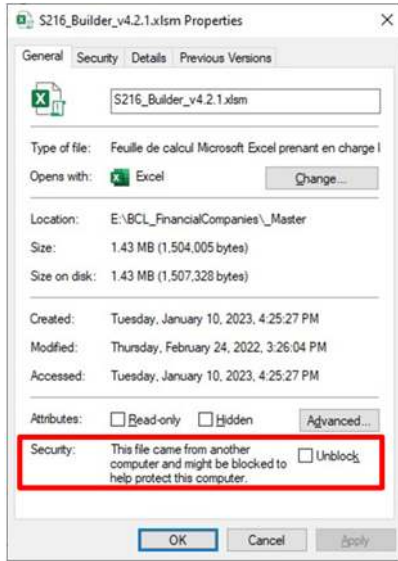
Standard Windows protection - unlocking a file

This problem may or may not be present depending on your security settings.

Any downloaded file may have been blocked and needs to be unlocked in order to be used (opened).

It is also possible that your security does not allow you to unlock such a file and that the operation must be performed by an IT person.

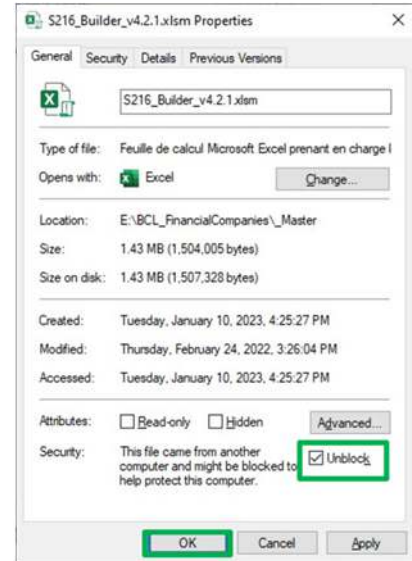
The easiest way to check if a file is blocked is to right-click on the file, bring up the context menu and select "Properties". Here is an example of the window this will display if a macro is locked and how to unlock it :



1. Select "Unlock"



2. Click on "OK"



The blocking is often applied at the ZIP level. You can unblock the ZIP first and then extract the tools, these will be unblocked. An article detailing the problem can be found at the following link : <https://www.elevenforum.com/t/unblock-file-downloaded-from-internet-in-windows-11.1125/>

Quick tips

Preparation

When you receive the tools (first time or during the yearly renewal), we advise to follow these steps :

- Unzip the tools in a backup directory and copy the ZIP file with it.
- Write down the password to open the ZIP.
- Make another copy of tools and place them in a directory named “_Master”.
- Open each tools that will be used and set all the desired options and parameters.
- Eventually, perform a further back of these configured macros.
- Copy the tools used as many times as the number of declarer entities, each having its own folder.
- Start using them.

Filling

- Press TAB button of the last cell (column Reported Amount) of the last line of one of the two tables to create and jump to a new line.
- All the values that you will need to add to the Assets/Liabilities tables are included in the drop lists of each line. Click on the cells to display these lists.
- This is useful to disable the system’s thousands/decimals separators, it may bring conversion problems. Go in Excel’s options => Advanced=> Editing options => unclick the system’s separators check box.
- In order to delete a whole line, click the delete button with the trash icon. For simply deleting a cell’s value use the keyboard’s delete button.

Various

- You can disable the automatic excel help (cell’s comments) in the option once you do not need anymore this extra help.
- Always set and verify the Headers data before updating any report, ensure to capture the data for the right entity and the right reporting period.