

9. Admin functions

S106 Builder

10. Help contact info

UIT



1. Customer information

U ITactical Funds Corp

License granted to the company 'companyName' until 2016/12/31 included.

2. Language selection

Layout 1 v 1.0



8. Open S106 XML report

Version1.2

End Month Date2015-12-31

CurrencyEUR

ReporterType27Code000000789

Creating Date2016-06-17T09:33:05

Closing Date2015-12-31

Layout1


DeclarantType27Code001220003

Open S106

S0106_L1_201512_K000000789_K001220003_20160617_001.xml

Export S106

7. Quick reminder / help


ASSETS

Item	Country	Currency	Sector	Initial Maturity	Reported Amount
1-006000	XX	XXX	90000	I999-999	10.859,00
1-007000	XX	XXX	90000	I999-999	3.569,00

6. Enhanced control checkbox

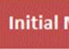
☒

5. Intelligent capture & auto-filling

LIABILITIES

Item	Country	Currency	Sector	Initial Maturity	Reported Amount
2-011000	XX	XXX	90000	I999-999	14.859,00

4. Enhanced eraser function



3. Protected export function

1. Customer information

Visibility

Consolidation

Declarant company name can be set by the user, one copy of the tool by issuer
Yearly licensing of the tool includes now any major update required by the regulators



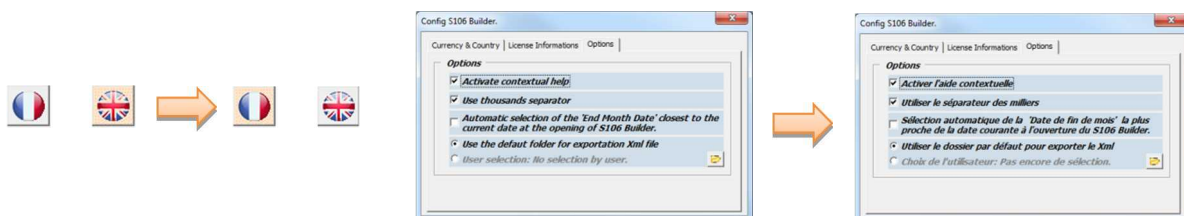
One directory and one copy by company. Keep your captured data from months to months

2. Language selection

Interface

Choose between English / French languages

Full translation (text buttons, comments, infos / warnings / error messages)



3. Protected export function

Consolidation

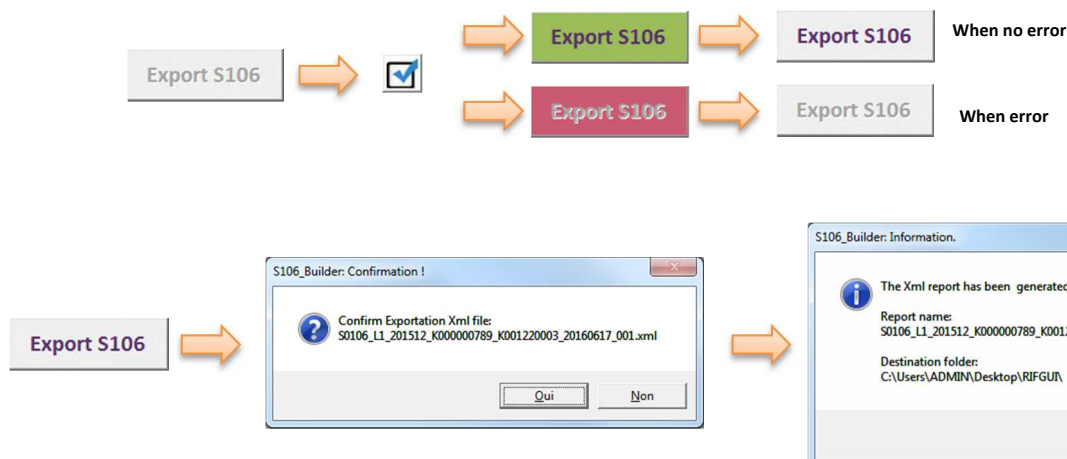
Visibility

Consolidation

Button is only available after a successful "Checkbox verification"

Button will flash green or red depending on check results

No export possible if the macro spots at least one error



4. Enhanced eraser function

Interface

Interface

Delete item lines easily in 1 clic

Double clic the icon to remove all the line of a table



5. Intelligent capture & auto-filling

Interface
Interface

Auto-complete mandatory fixed data based on item category chosen
Narrow choice list depending on the item category

ASSETS					
Item	Country	Currency	Sector	Initial Maturity	Reported Amount
1-006000					
1-007000					

ASSETS					
Item	Country	Currency	Sector	Initial Maturity	Reported Amount
1-006000	XX	XXX	90000	1999-999	

6. Enhanced control checkbox

Consolidation
Consolidation
Visibility

Complete verification : captured values, Totals, difference of Totals, occurrences of items
Export button is enabled only if no error found
On error : Export button disabled
Displays relevant error text
Highlight errors in the tables

☒ S106_Builder: Error(s) in table(s)!

ASSET table:
- Duplicate rows exist:
-> rows 25 <- same -> 27
-> rows 25 <- same -> 28
-> rows 27 <- same -> 28

LIABILITIES table:
- Duplicate rows exist:
-> rows 25 <- same -> 26

Open S106

S106_L1_201512_K000000789_K001220003_20160617_001.xml

Export S106

ASSETS					
Item	Country	Currency	Sector	Initial Maturity	Reported Amount
1-006000	XX	XXX	90000	1999-999	10.859,00
1-007000	XX	XXX	90000	1999-999	3.569,00
1-006000	XX	XXX	90000	1999-999	3.652,00
1-006000	XX	XXX	90000	1999-999	-250,00

LIABILITIES					
Item	Country	Currency	Sector	Initial Maturity	Reported Amount
2-011000	XX	XXX	90000	1999-999	14.859,00
2-011000	XX	XXX	90000	1999-999	6.584,00

7. Quick reminder / help

Interface

Position cursor on top of fixed cells or column name displays useful information

Item	Item
1-006000	1-006000 - Non-financial assets
1-007000	1-007000 - Financial derivatives

Rubrique	Rubrique
1-006000	1-006000 - Actifs non financiers
1-007000	1-007000 - Instruments financiers dérivés

8. Open S106 XML report

Interface

Browse, open & load any S106 XML report

Open S106

Browse and select XML report

S106_Builder: Confirmation !

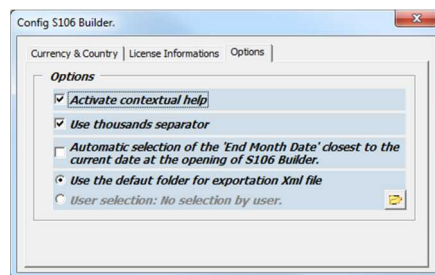
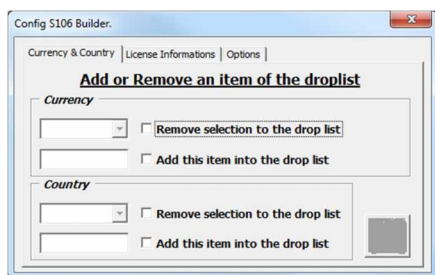
Data are present into a table.
Please confirm to replace data with imported data from:
S106_L1_201512_K000000789_K001220003_20160617_001.xml

Oui Non

9. Admin functions

Consolidation
Interface
Options

Allow to add or remove a currency or country code
Displays licence information
Allow content's configuration for comments and calculated amounts



10. Help contact info

Support

Need help ? 1 click contact info window

